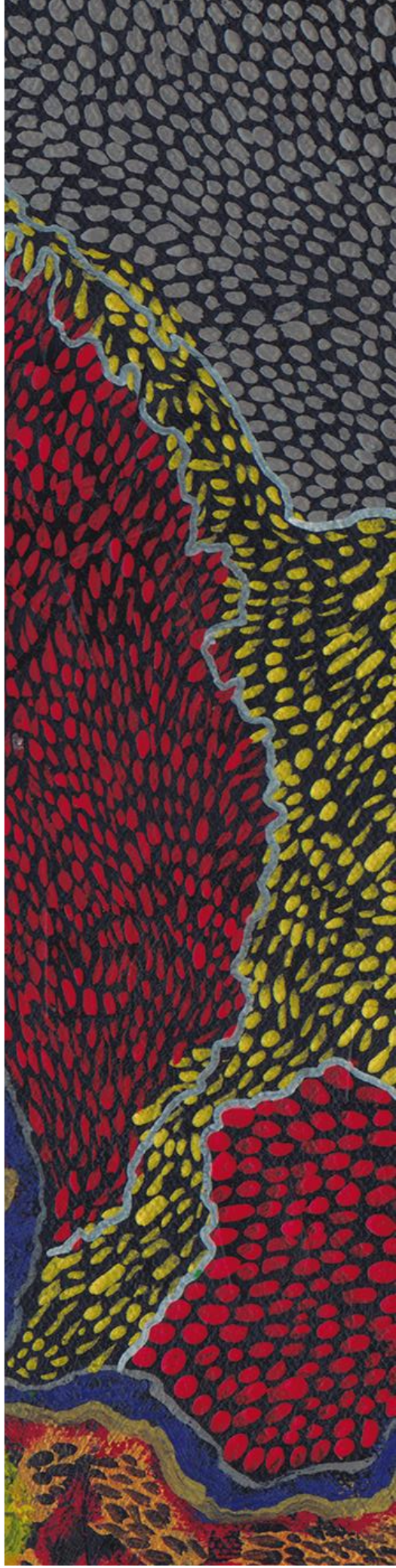


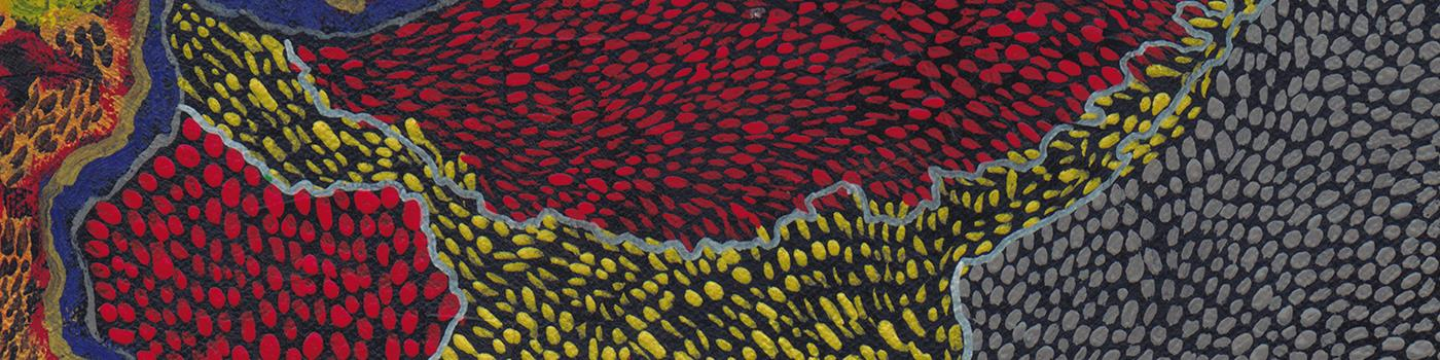


ERIC BLIN

PRESS BOOK

Update: 03-2025





Index

The Artist.....3

His Universe.....13

Events.....73

Press Contact.....76

THE ARTIST





"My technic of pointillism is a pictorial technic that encourages the eye and the mind to melt and assimilate the dotes of color in a wider chromatic range."

THE ARTIST



ERIC BLIN

THE ARTIST



ERIC BLIN

THE ARTIST



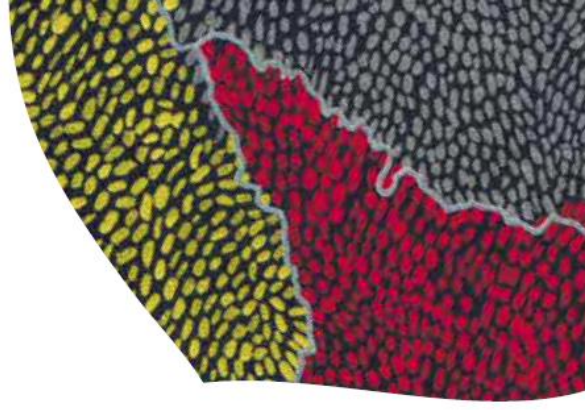
Eric Blin is a Parisian Artist who has spent many years abroad before returning to France in 2018.

After starting in the field of Fashion, Eric is a multidisciplinary contemporary artist who explores through dreamlike tunes, cartography or textile prints, the fragility of the cells of the human body and other nervous tissues.

Its relief effects inspired by pointillism reflect his affection for textile embroidery, such as a cellular embroidery characteristic of the human body capturing for a moment, a feeling, an emotion.

It is through this wide creative spectrum that Eric likes to share and paint his vision of the world transgressed by his inclination for the abstract.

THE ARTIST



It is a relatively original approach since the successions of dots affixed to the canvas allow taking a distance to see the birth of a true work often inspired by aboriginal Art.

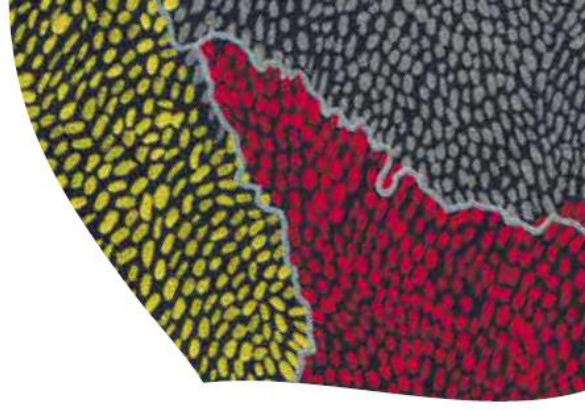
Contemporary Aboriginal painting emerge in the nineteen-seventies thanks to aboriginal painters who decided to share on the flat surfaces representations of the sacred legends of their people.

Inspired by the latter Eric concludes: “my Art relates to time, body and spirit in a kind of microscopic legend where the infinitely small and the timeless never stop to conjugate and reinvent themselves”.

A cellular dream will thus develop and expand on the canvas.



THE ARTIST



“Best way to describe myself is that I am artistic, imaginative and innovative. I like to use my creativity to express feelings and emotions. I’m deeply focused on all kinds of arts, performance, writing and fields that refer to unusual and aesthetic styles.

I rely on my intellectual and critical thinking skills to perform my work in the most appropriate way. I’m naturally more reserved and introspective in my approach to solve problems and use my curiosity to drive original and complex developments.”

THE ARTIST

● ACADEMIC BACKGROUND

2012-2010 *Paris American Academy, Paris – France*
“Bachelor of Arts” – Fashion Design Specialty

2010 *Fashion University Jannette Klein, Mexico City – Mexico*
Bachelor – Fashion Design

2010-2007 *Ecole de Condé, Paris- France*
BTS Fashion Design

● PROFESSIONAL BACKGROUND

2015 *Lauren Baker, Home Design, Art Work, Projects and Exhibitions, London- United Kingdom*
Designer Assistant

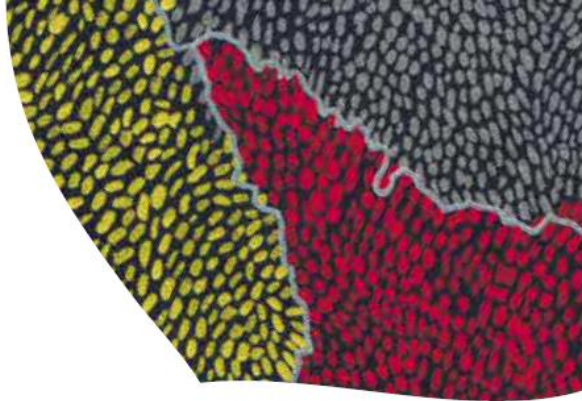
2015 *Dragana Perisic- Prêt-à-porter Female, London- United Kingdom*
Designer Assistant

2014-2013 *Lulu Liu London- British Brand of Prêt-à-porter Female, London- UK*
Designer Assistant

2011 *Rick Owens- American Brand of Haute Couture & Prêt-à-porter Male & Female, Paris- France*
Fashion Assistant

2009 *George Rech – French Brand of Prêt-à-porter Female, Paris - France*
Fashion Assistant

THE ARTIST



Eric has been dedicated to Plastic Arts since 2015.

Upon his return from London in Fall 2018, he has established his workshop in the 16th District of Paris.

THE ARTIST



SOCIÉTÉ DU SALON D'AUTOMNE
PARIS

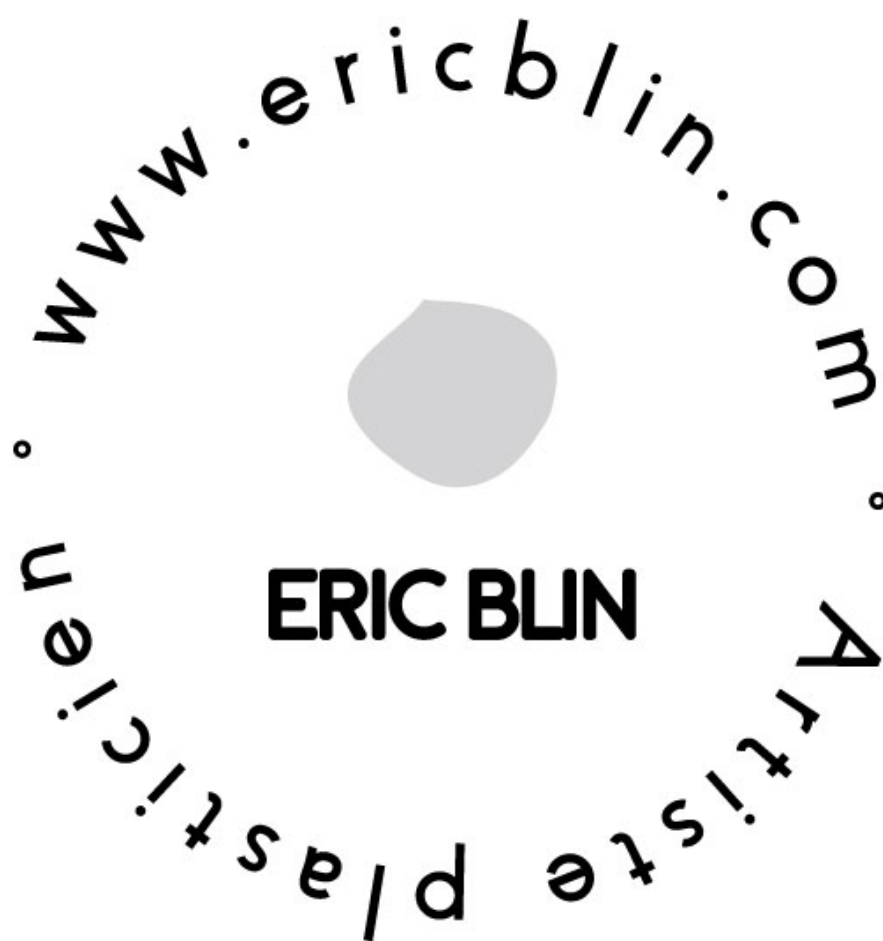
Eric has been a permanent member
of the Society of the Salon d'Automne since January 2025.

HIS UNIVERSE



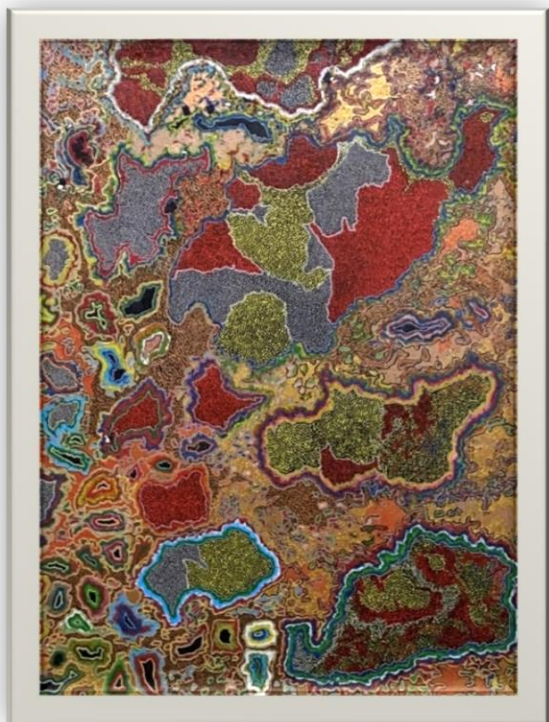
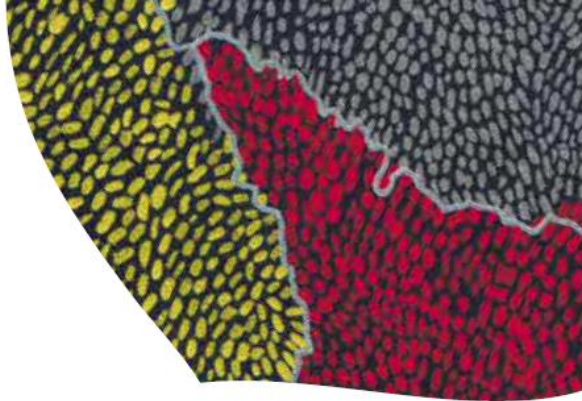


Discover Éric's universe
onto his website:



HIS UNIVERSE

Large size formats

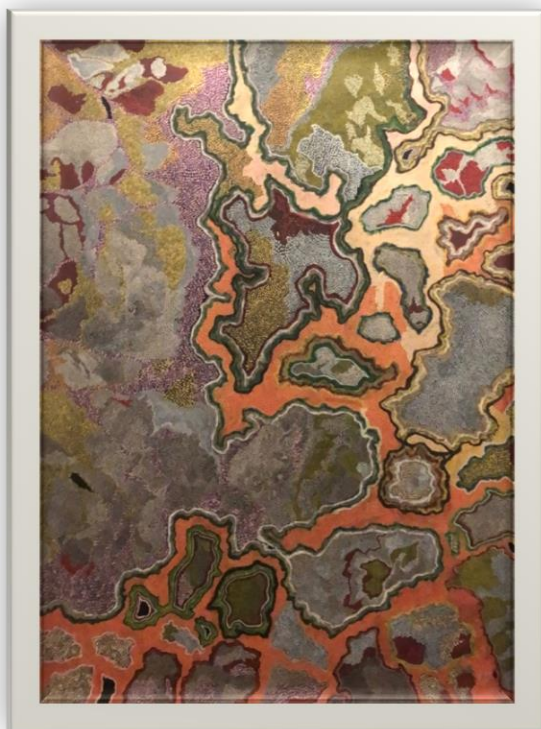


SYMBIOSIS

Intimate and lasting
association
of the symbiotes

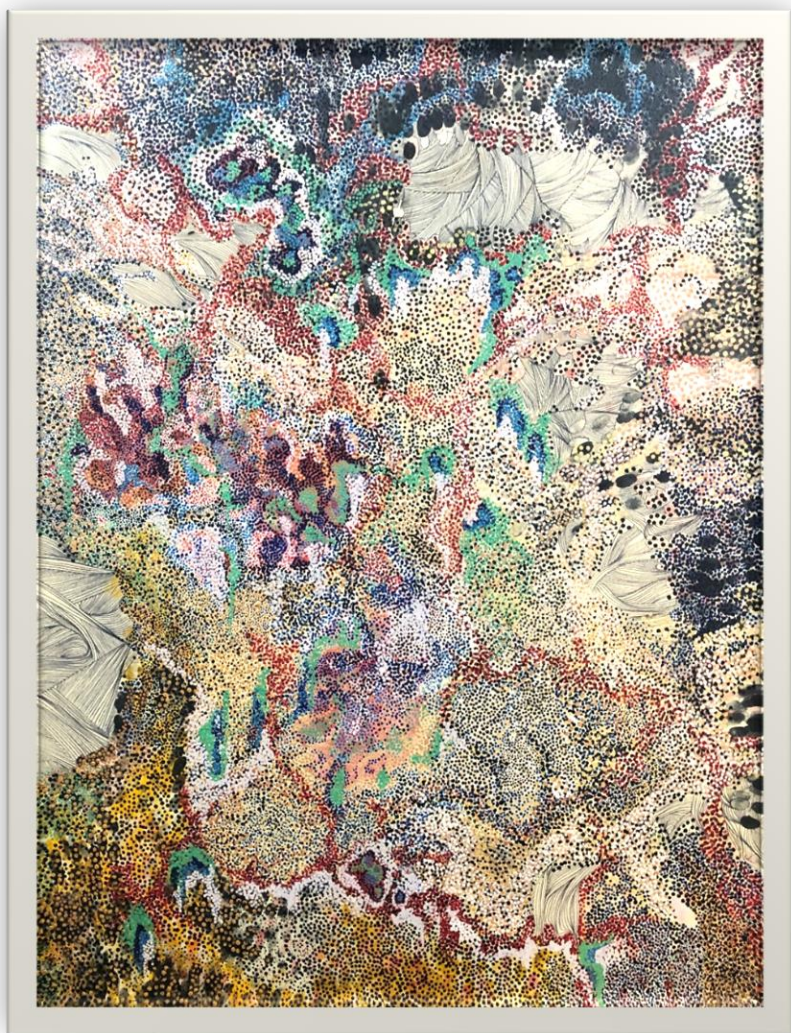
OSMOSIS

Perfect
communication
of the symbiotes



HIS UNIVERSE

Large size formats



BLOSSOM

When the season is coming,
they reveal themselves

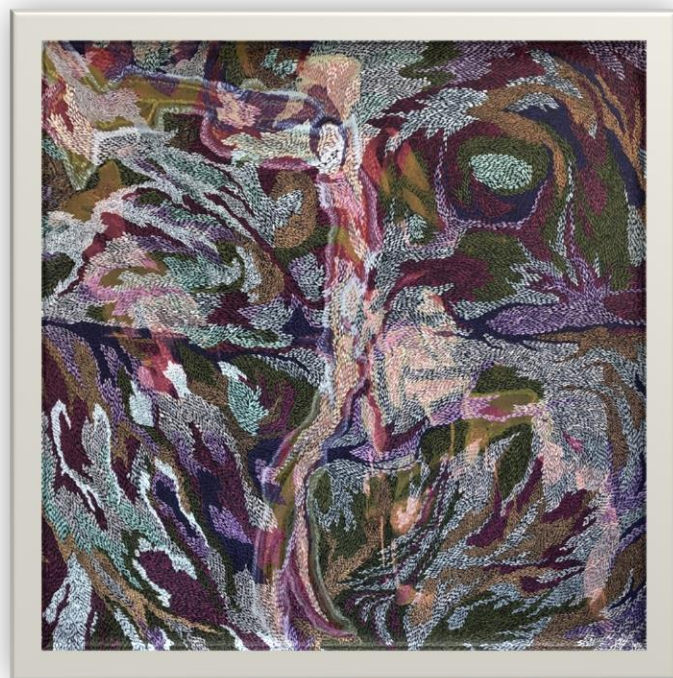
HIS UNIVERSE

Large size formats



CASHMERE

Textile
nostalgia



BROCELIANDE

Myth
takes form

HIS UNIVERSE

Large size formats

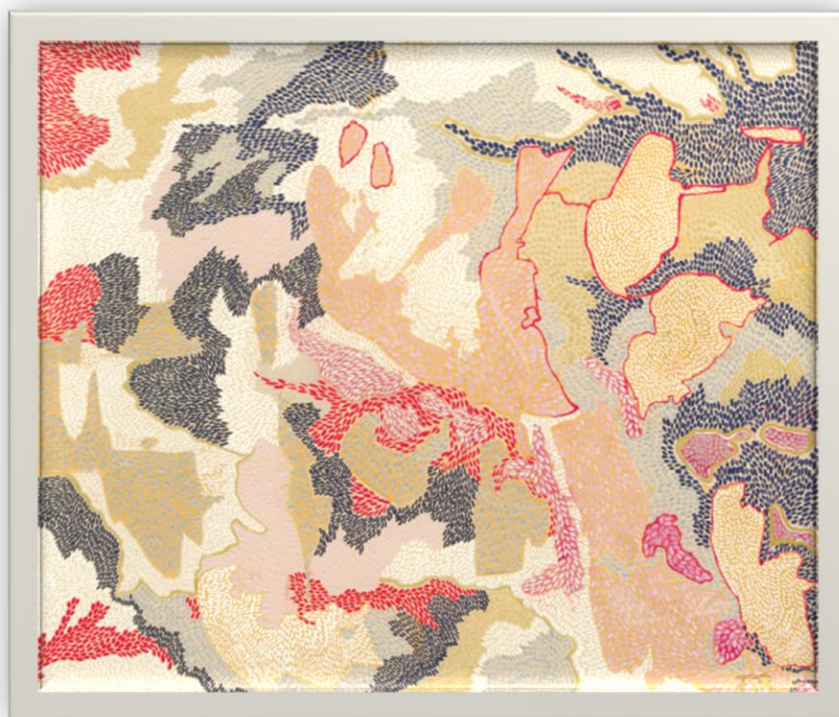


ACME

Peak of a philosophical thought

HIS UNIVERSE

Large size formats



LAVA

Static
river

HIS UNIVERSE

Large size formats

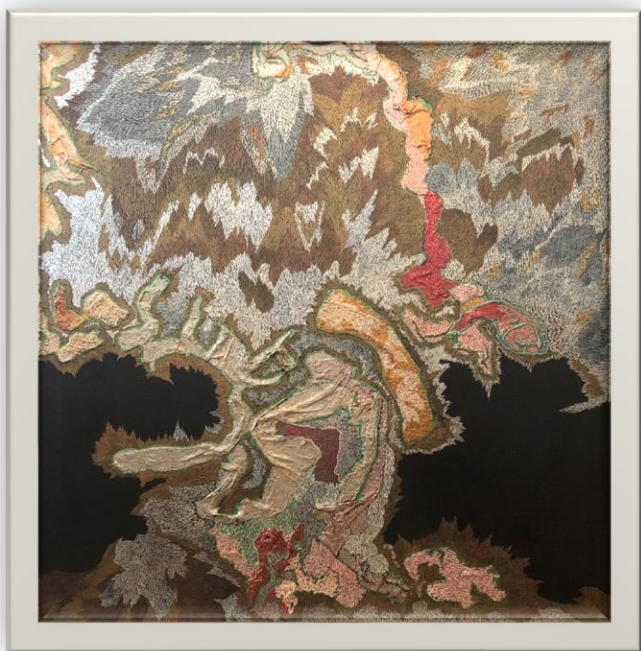
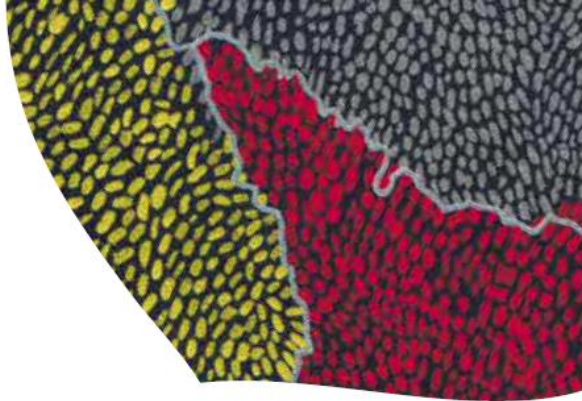


ELYSEUM

Final destination

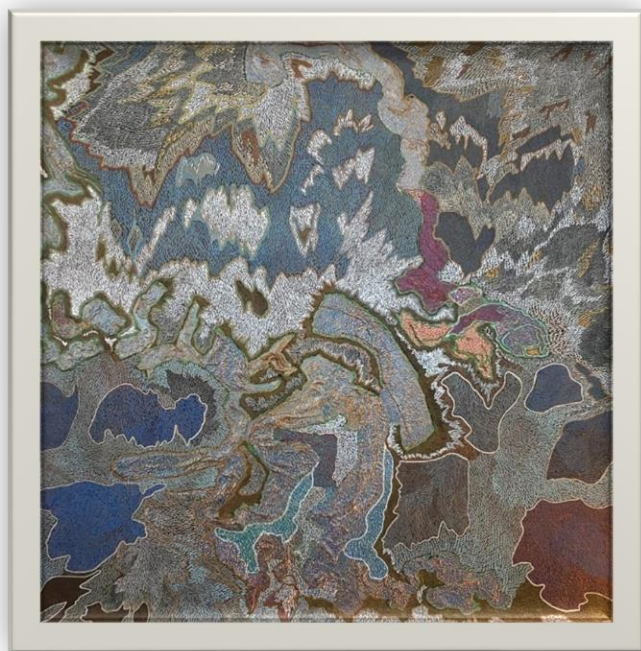
HIS UNIVERSE

Large size formats



SHADES

In the dark,
They reveal themselves
and dance



SHADES 2.0

Land Fracture,
Pangea Fracture

HIS UNIVERSE

Large size formats

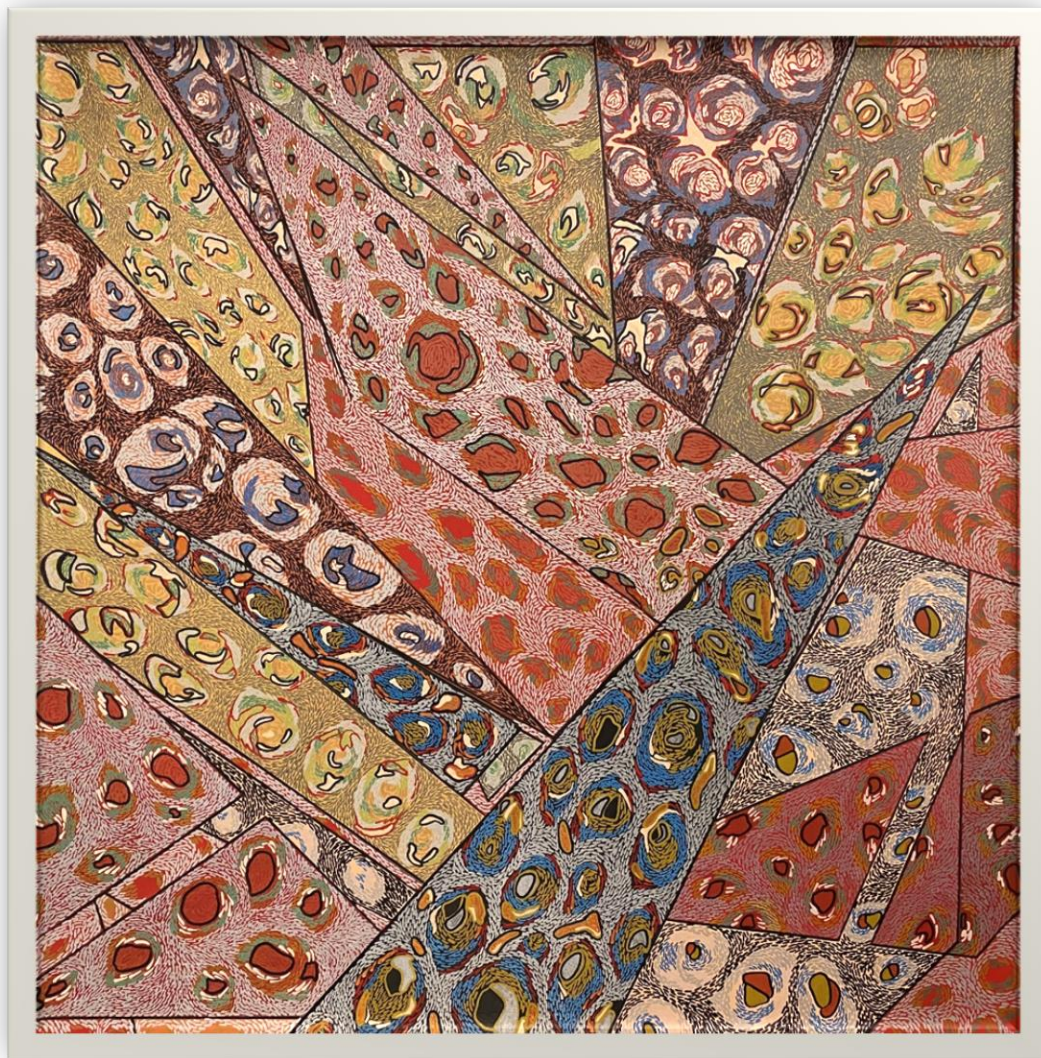


SYNAPSE

Chemical
connection

HIS UNIVERSE

Large size formats



ARGOS

Ocular lace

HIS UNIVERSE

Large size formats



FIBER PHILLY

Cerebellum

KOÏ

Empowerment



HIS UNIVERSE

Large size formats



COBALT

Co

HIS UNIVERSE

Large size formats



KHAMAILEON

Shape shifters

HIS UNIVERSE

Large size formats

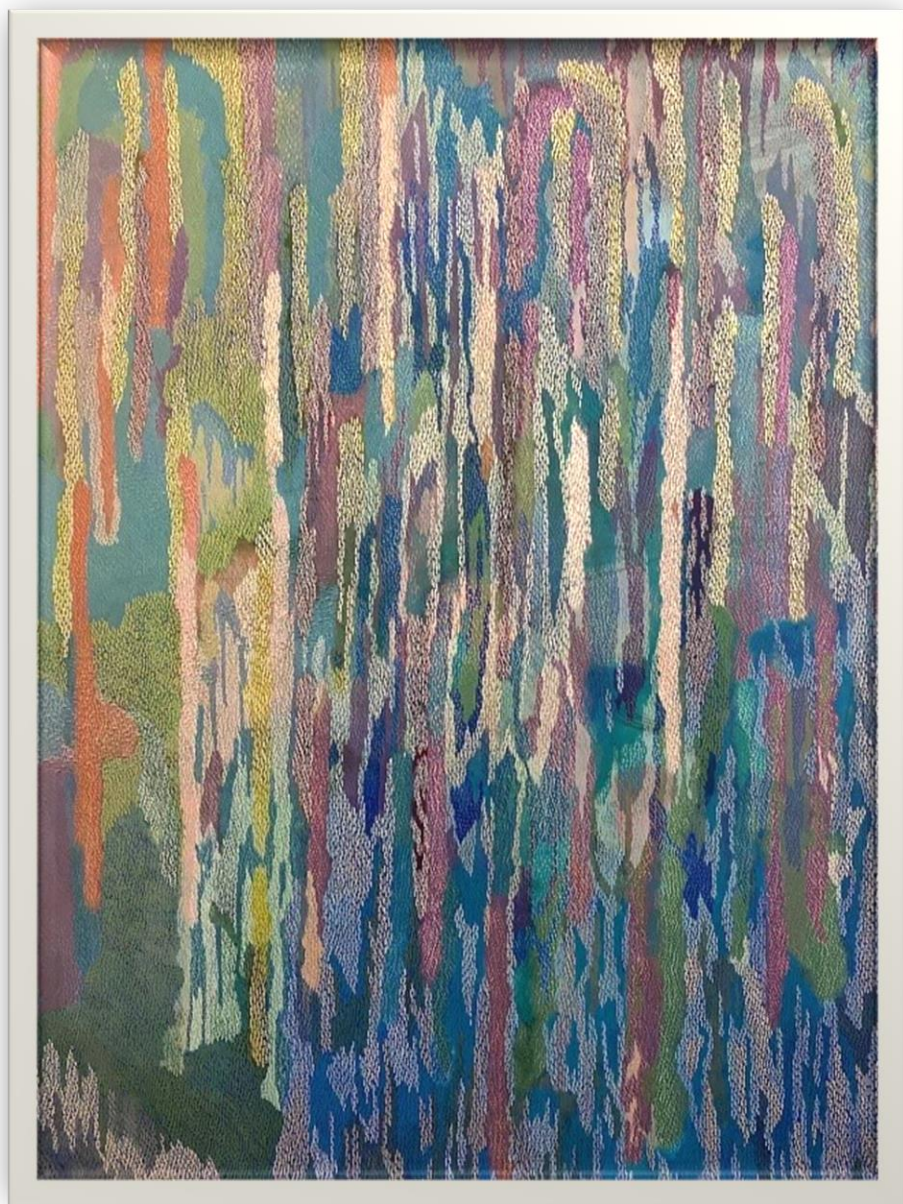


TYPHOON

Awaking

HIS UNIVERSE

Large size formats



Drippy

Slow but continuous conquest of the Space

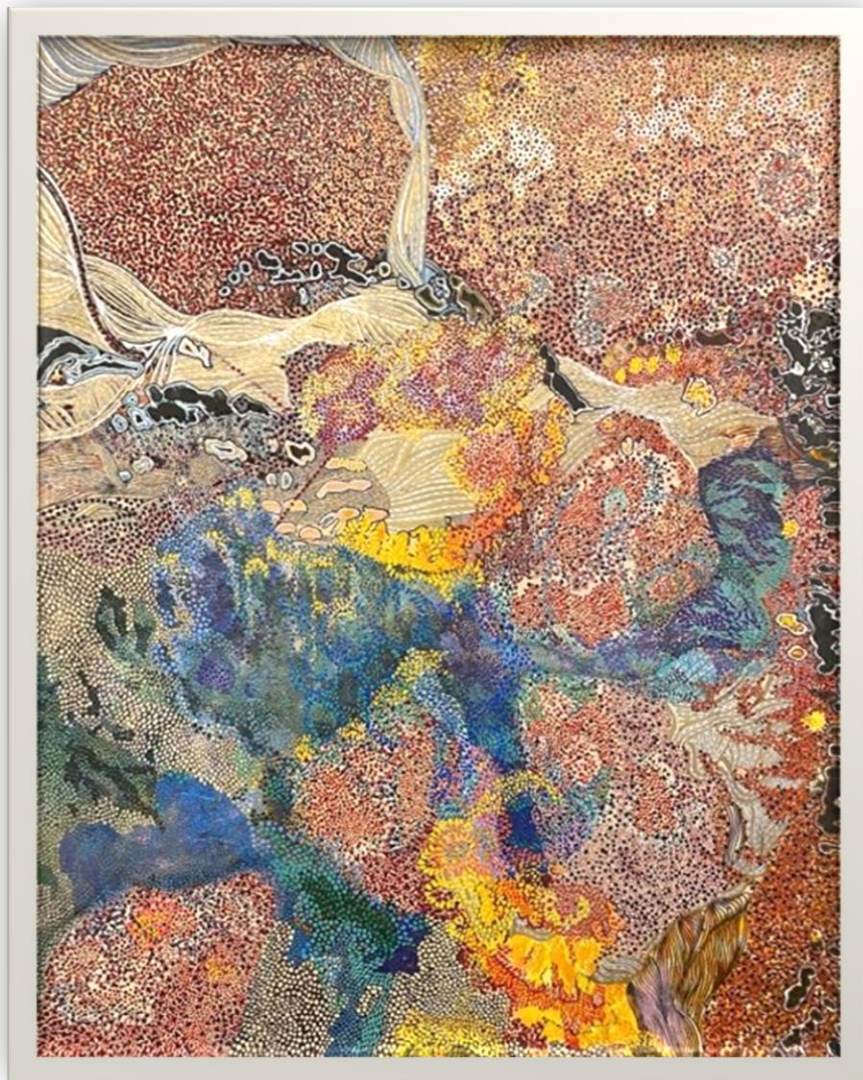
Primitive artistic approach translating the visible and the invisible.

Free and repetitive interpretation of micro-cellular lace.

“Drippy” is a finely orchestrated flood of overlapping and resembling paint drops that reveal a cascade of pastel.

HIS UNIVERSE

Large size formats



Supernova

Beyond Space and Time

HIS UNIVERSE

Large size formats

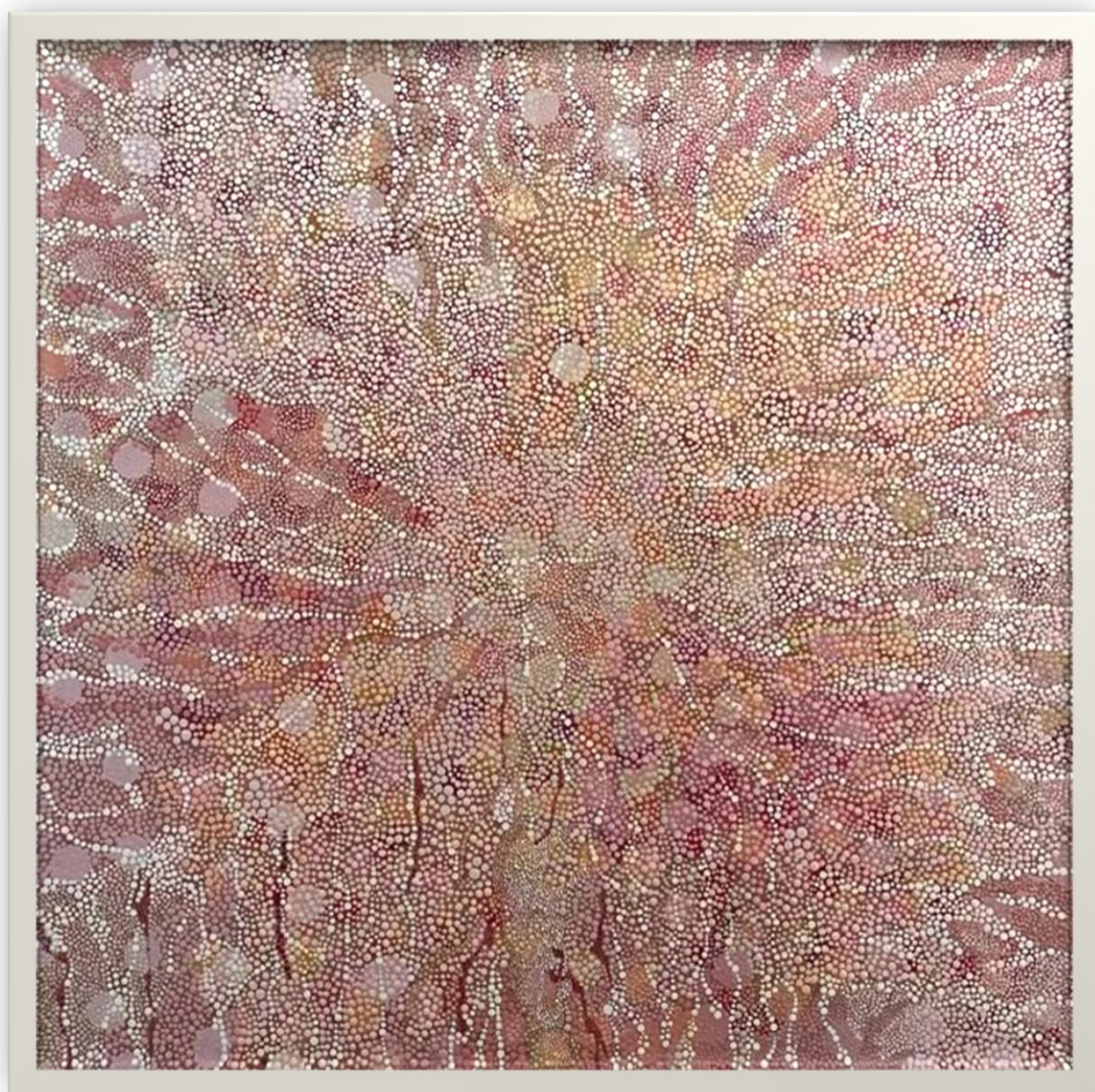


Candide

Faith of the Just and of Children

HIS UNIVERSE

Large size formats



Sakura

Ephemeral character of beauty

HIS UNIVERSE

Large size formats

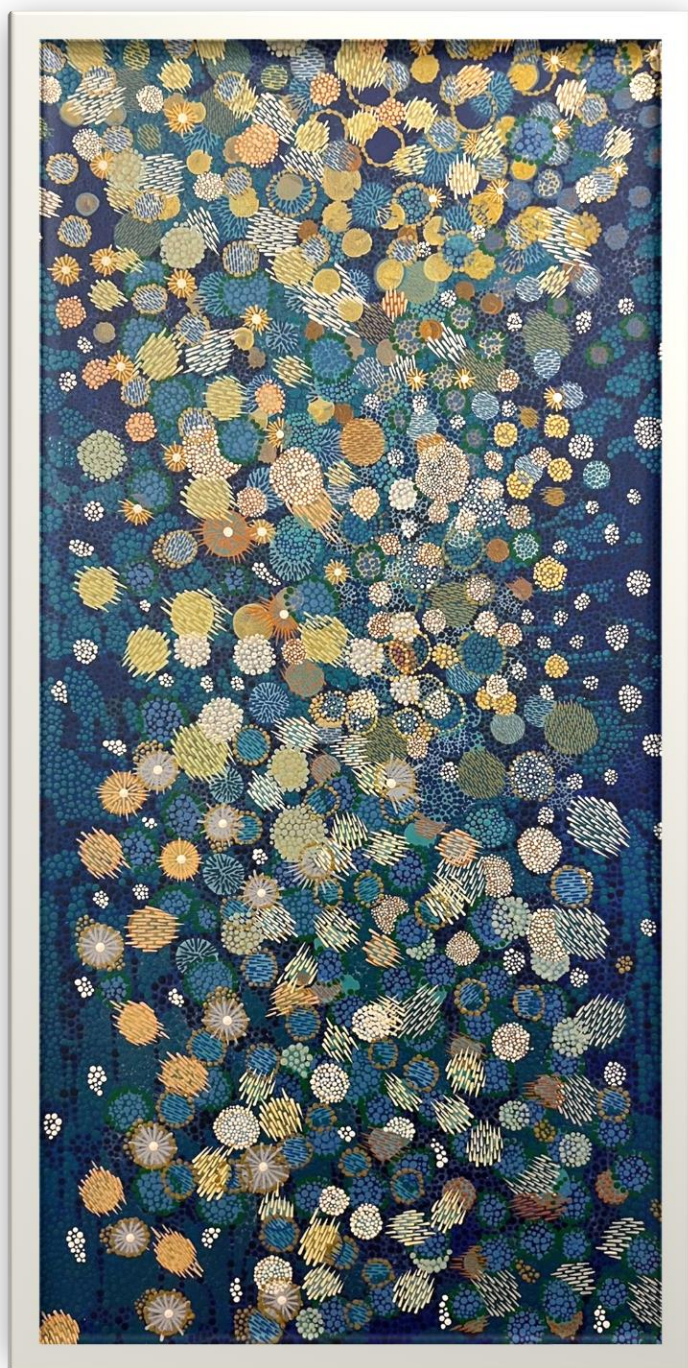


Secret Garden

The quiet place behind the bushes

HIS UNIVERSE

Large size formats



Summer Night Garden

The quiet place below the stars

HIS UNIVERSE

Large size formats

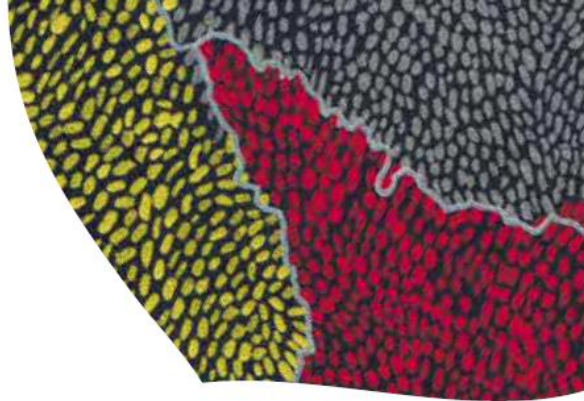


Epiderme

Surface layer of aerial parts of a plant

HIS UNIVERSE

Large size formats



Sanguine

Ode to the family we choose

HIS UNIVERSE

Large size formats



Grapefruit

HIS UNIVERSE

Large size formats



Chlorophylle

Beyond the tone

HIS UNIVERSE

Large size formats

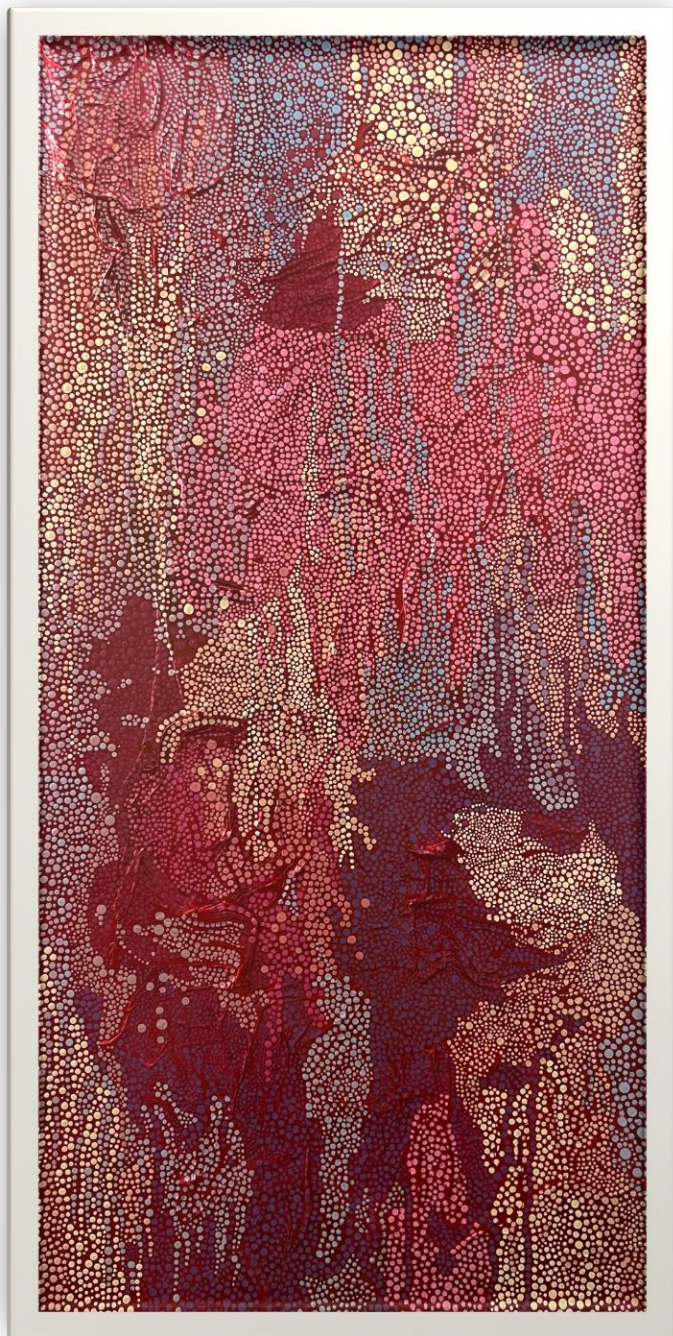


Bloody

Just a drop through life

HIS UNIVERSE

Large size formats



Grappa

Life tasting

HIS UNIVERSE

Large size formats

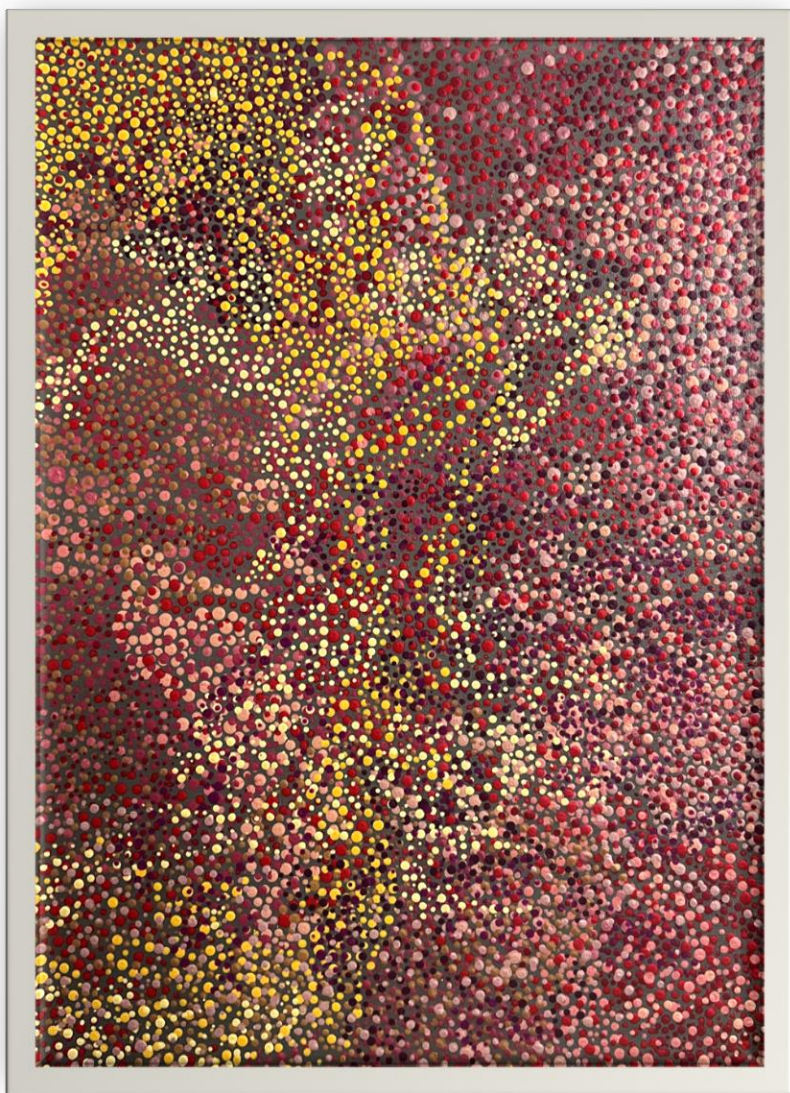


Plankton

Primary source

HIS UNIVERSE

Large size formats

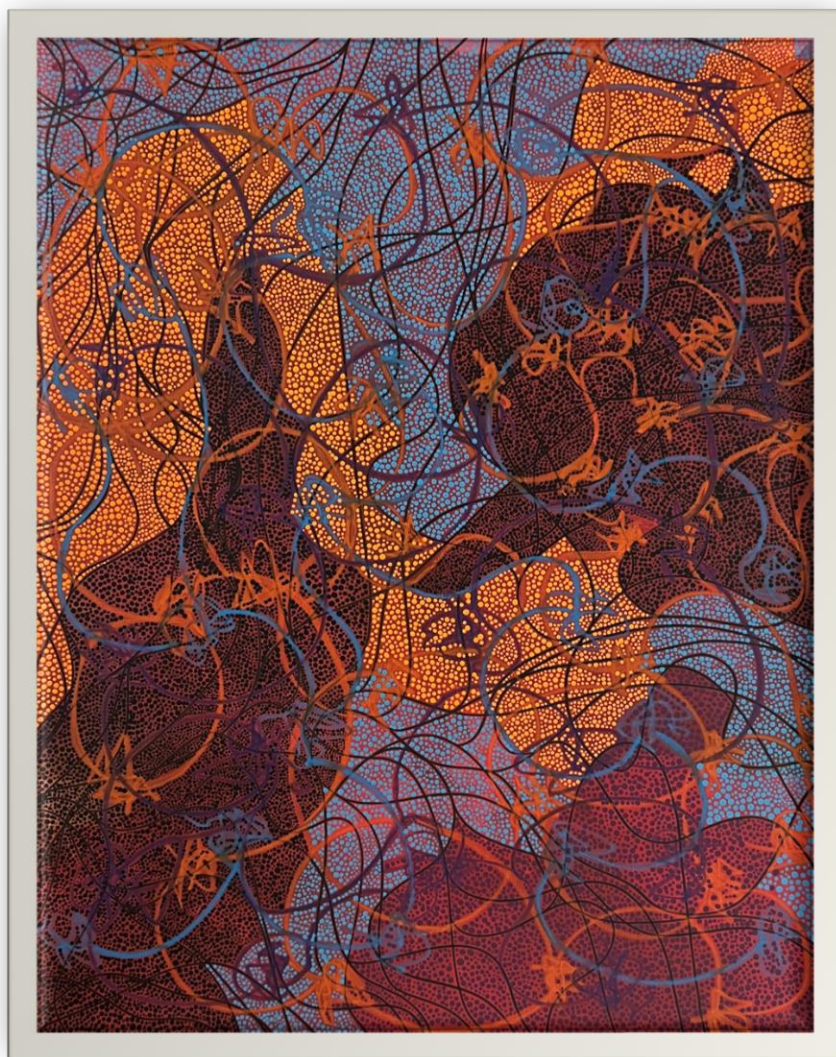


Cherry

Treat yourself

HIS UNIVERSE

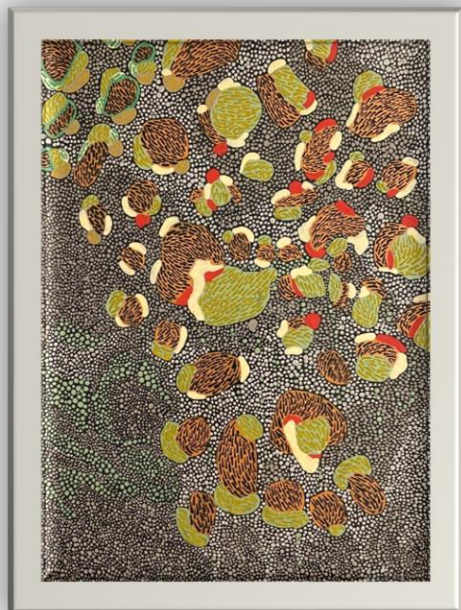
Large size formats



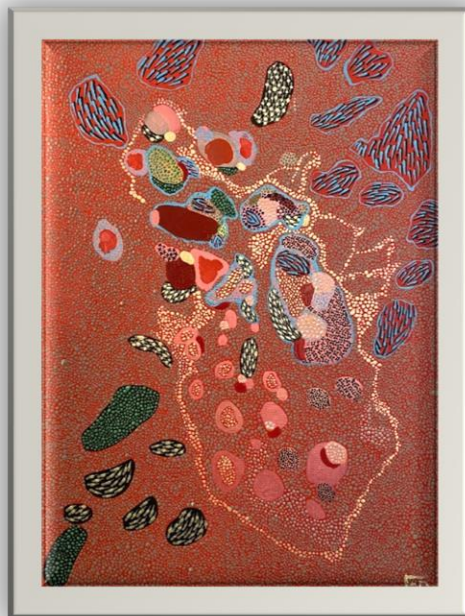
Knots

HIS UNIVERSE

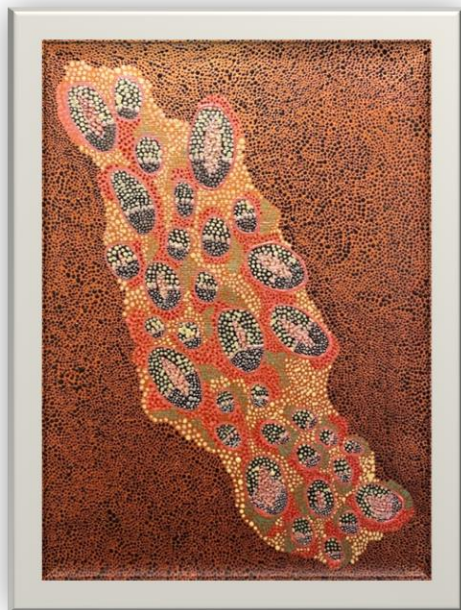
The collection of small formats



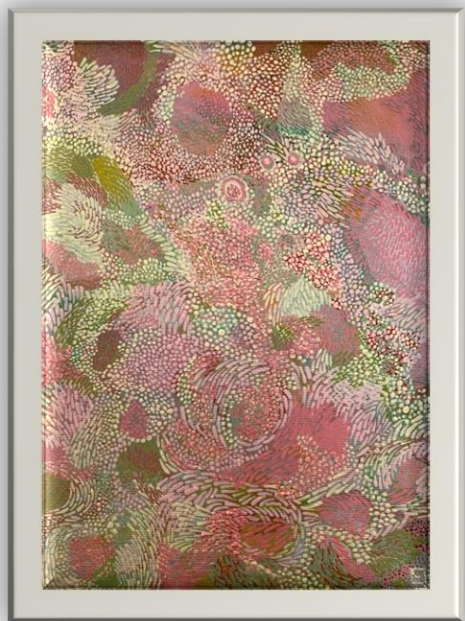
CHESTNUTS
Harvest in nature



LA DAME DE CŒUR
Motherly love



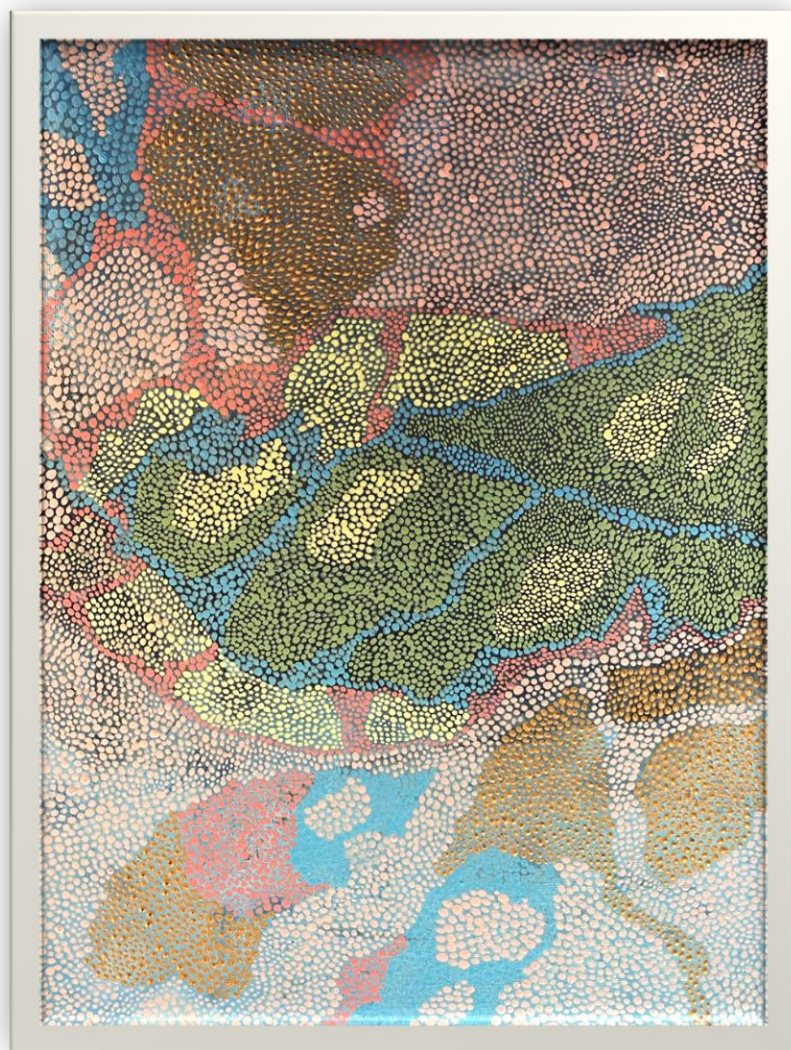
TENTARE
Tentacular imprint



POLLEN
Busy bee

HIS UNIVERSE

The collection of small formats

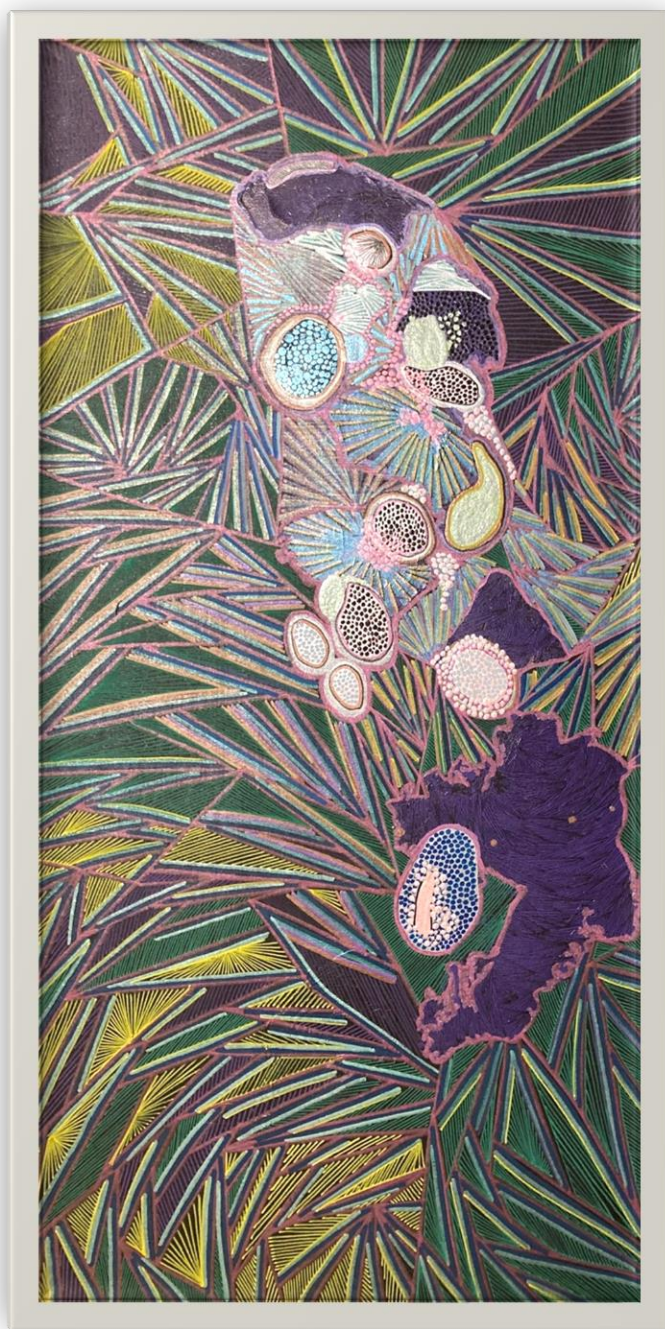


Mangrove

Between two worlds

HIS UNIVERSE

The collection of small formats

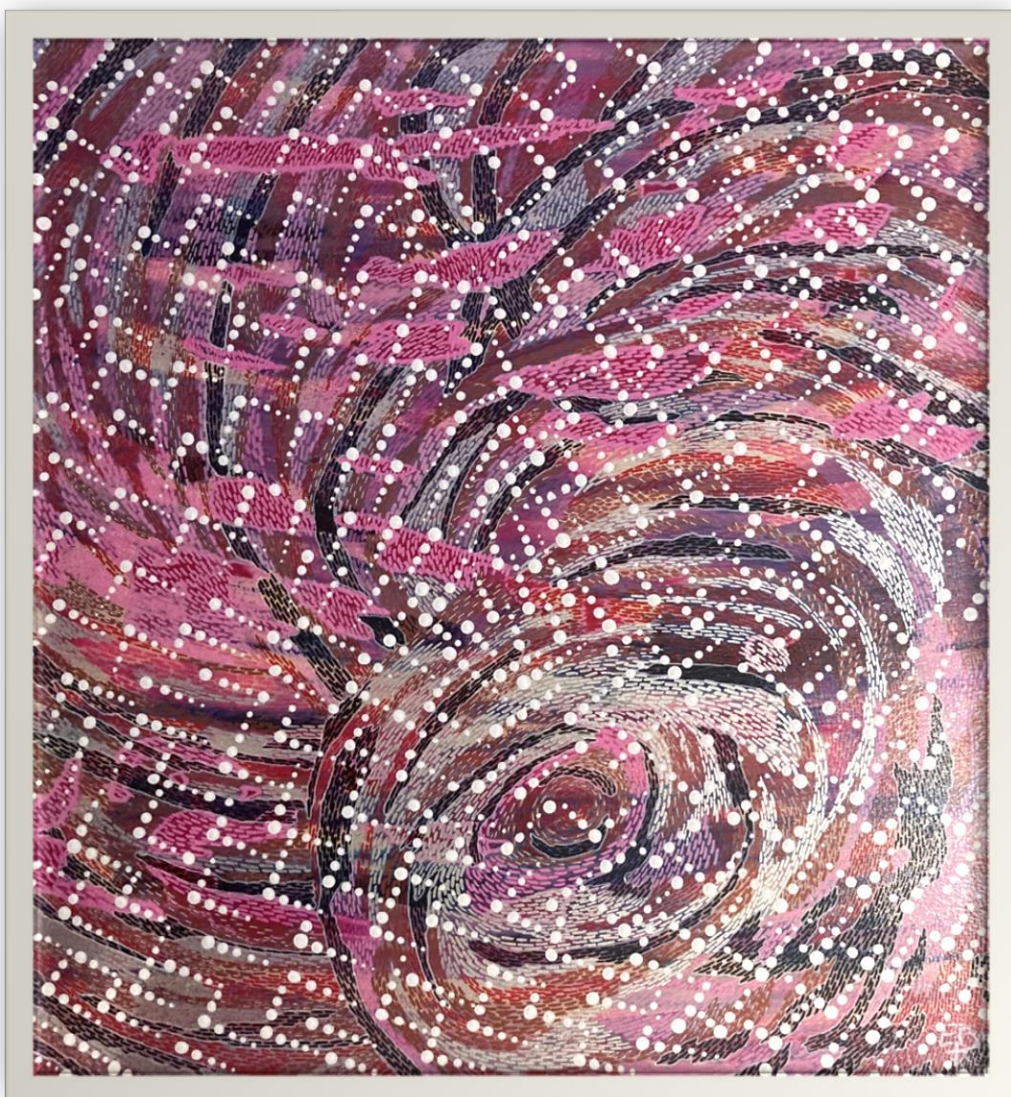


Neon Coconut

Refreshing lights

HIS UNIVERSE

The collection of small formats

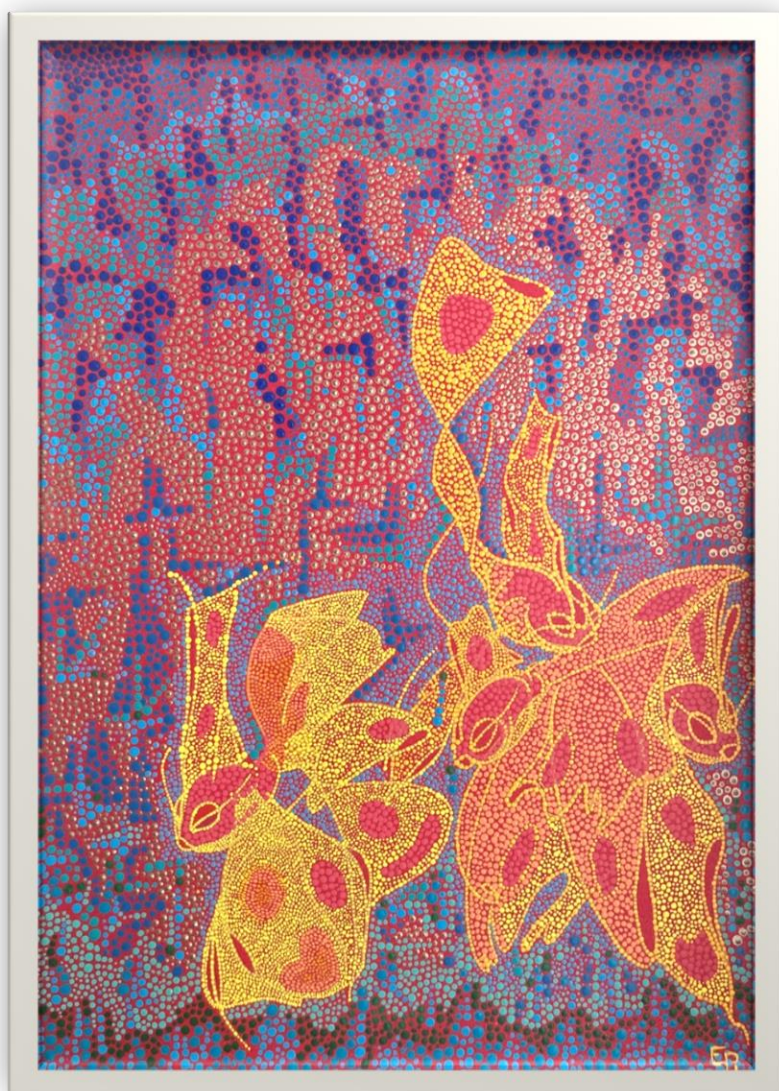


Care Bears

Welcome to my World

HIS UNIVERSE

The collection of small formats



Fishy

Underwater detail

HIS UNIVERSE

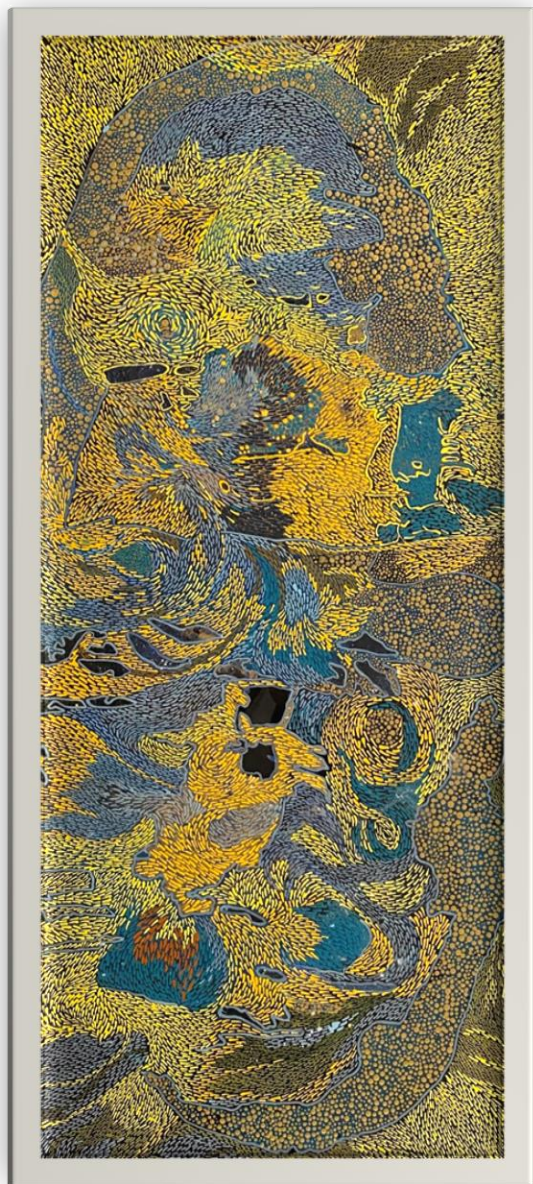
The collection of small formats



Substrat

HIS UNIVERSE

The collection of small formats

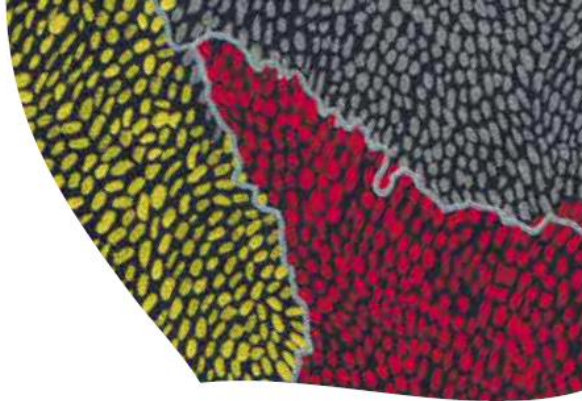


Anemone

Actinoscyphia Aurelia beyond the rift

HIS UNIVERSE

The collection of small formats



Needles 1

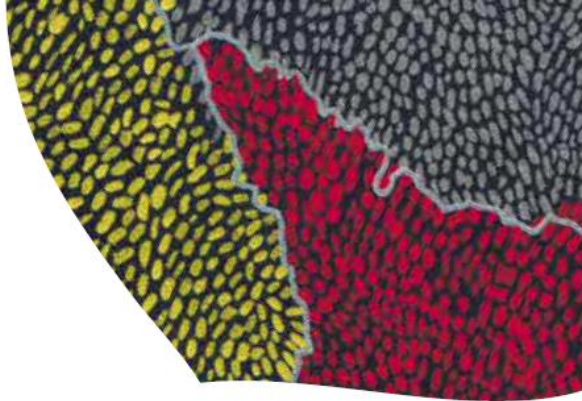


Needles 2

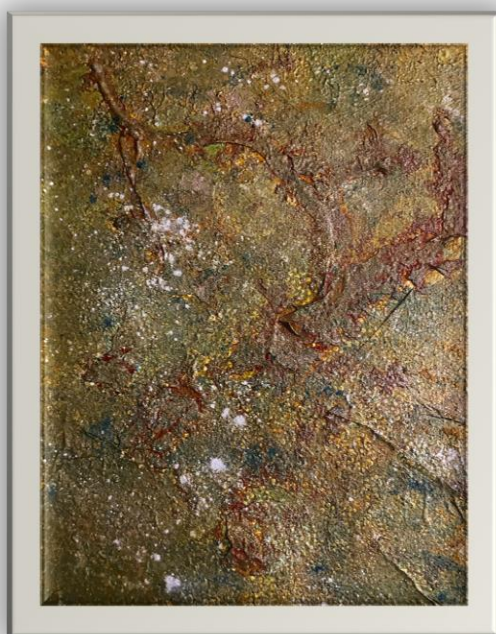
Stitching through

HIS UNIVERSE

The collection of small formats



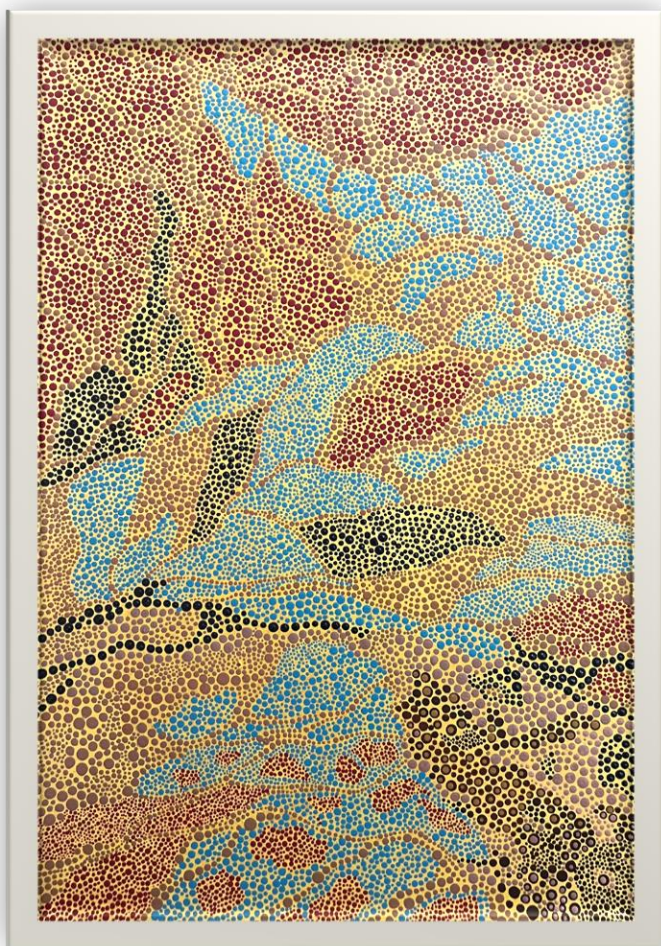
Indikon



Safran

HIS UNIVERSE

The collection of small formats

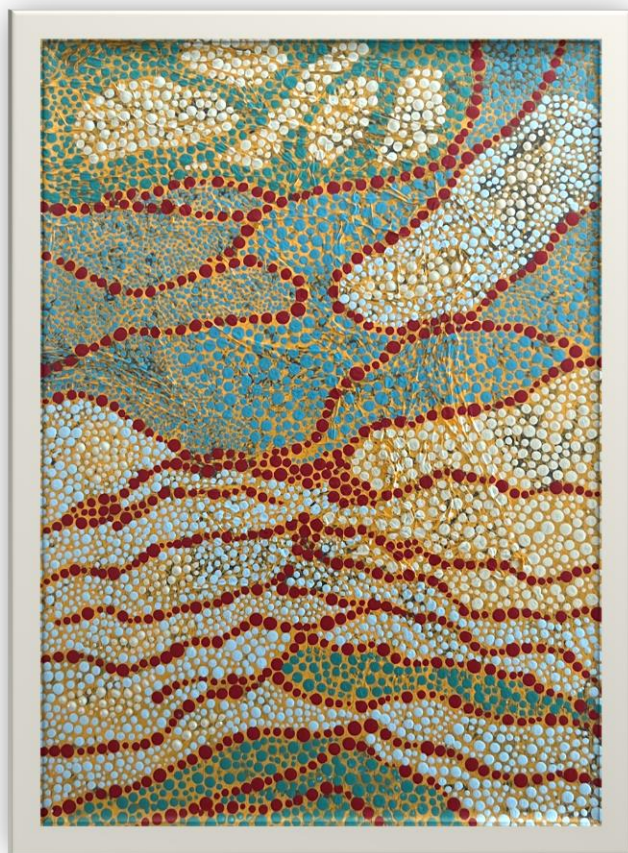


Dune

Last exploration

HIS UNIVERSE

The collection of small formats

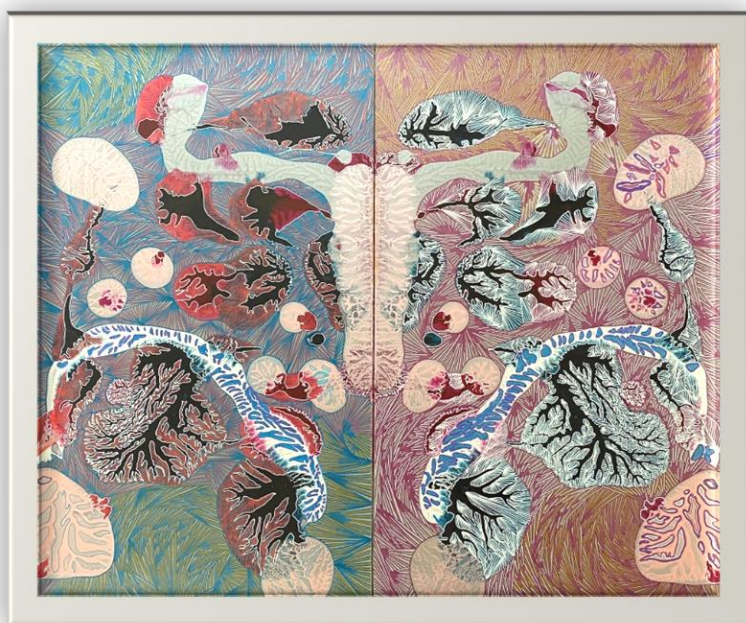
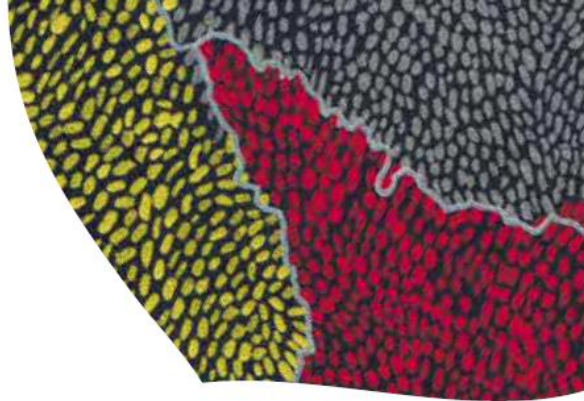


Summit

Sky is the limit

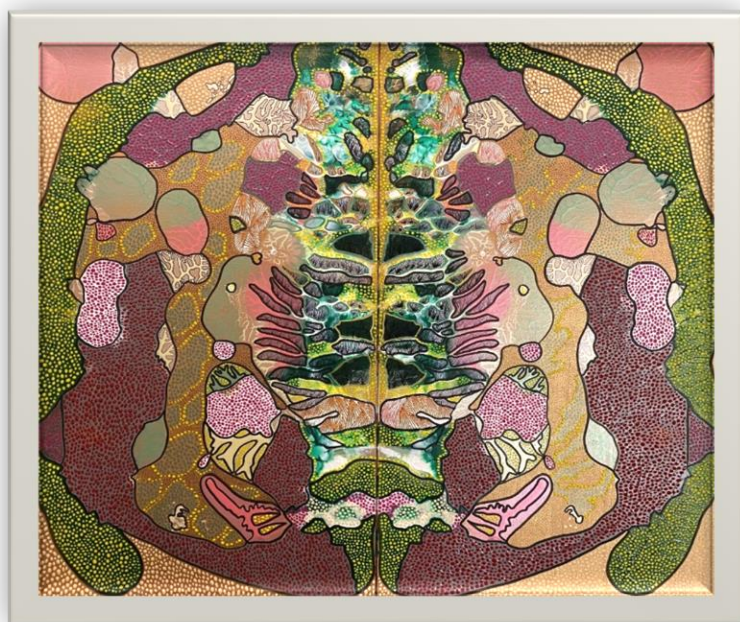
HIS UNIVERSE

The collection of diptychs



Matrice

The origin of the world

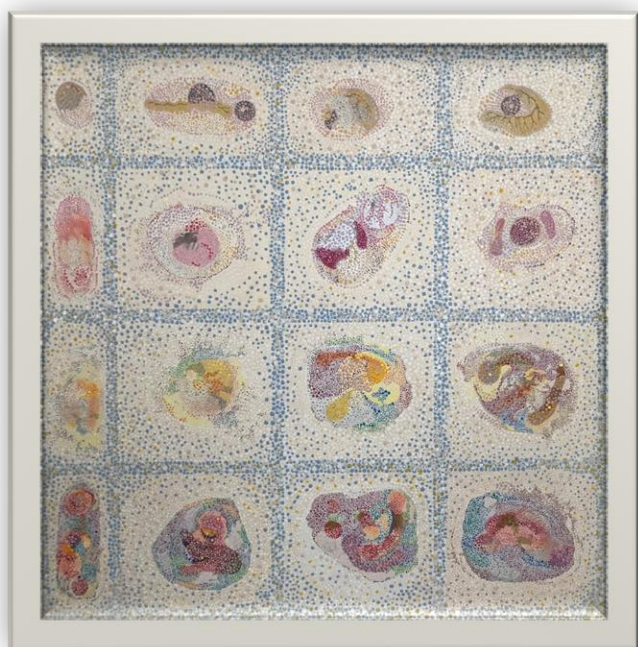
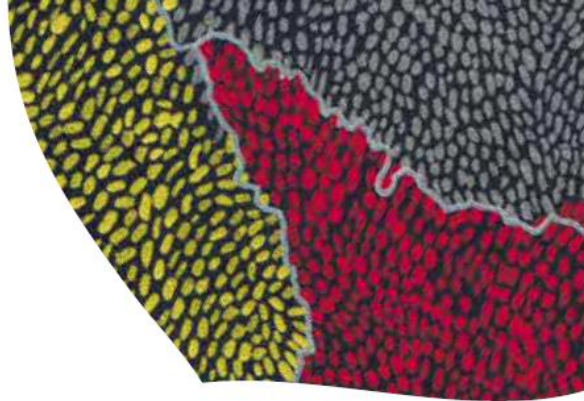


Tortuga

Ghost in the shell

HIS UNIVERSE

The collection of diptychs



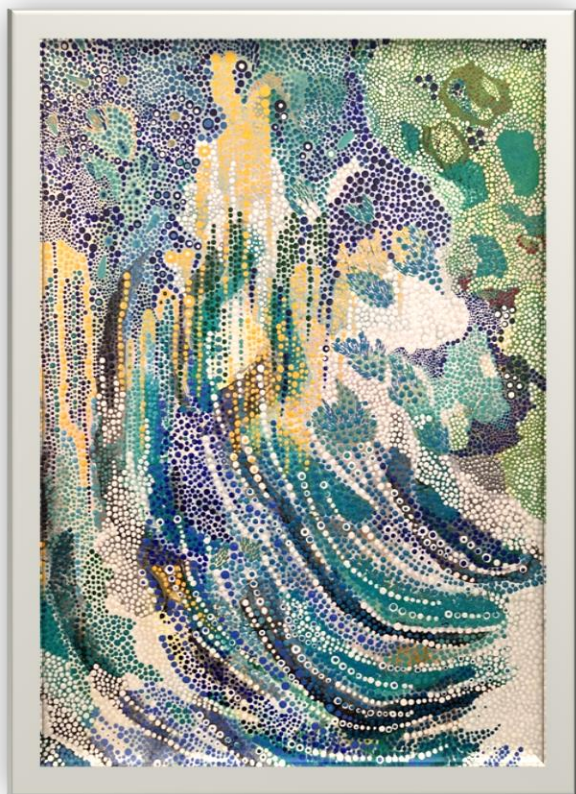
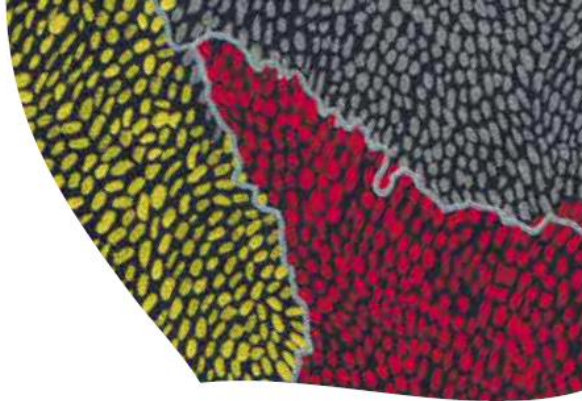
Asteroids

Cellules

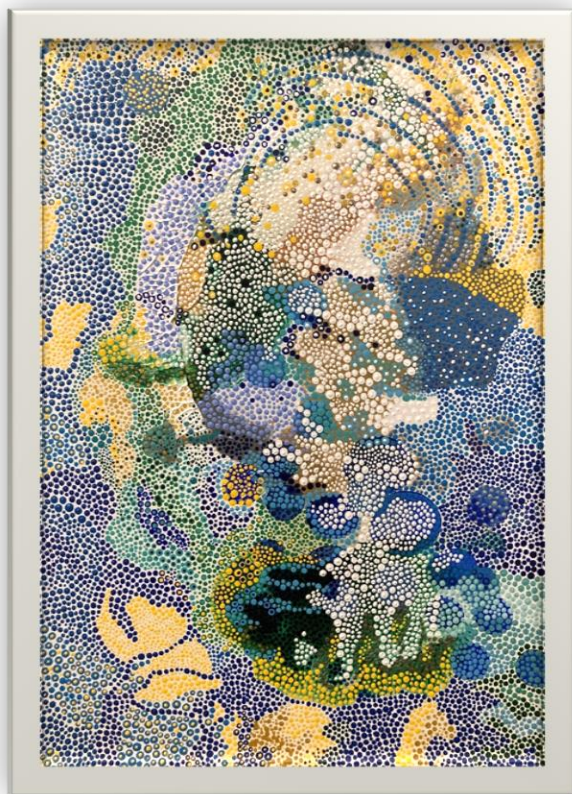


HIS UNIVERSE

The collection of diptychs



Waves

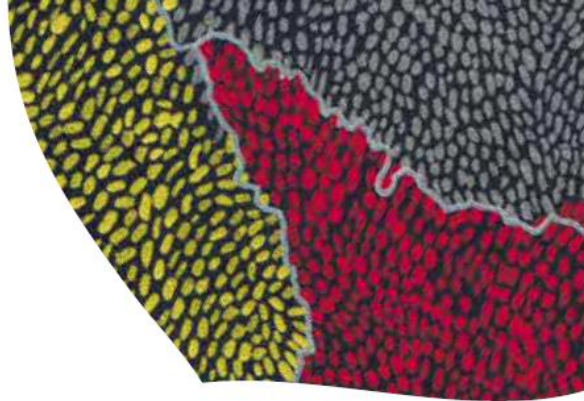


Cadran lunaire

A wave that retreats, tearful against the sand,
to the rhythm of the lunar calendar...

HIS UNIVERSE

The collection of diptychs



Nebula

Ascending

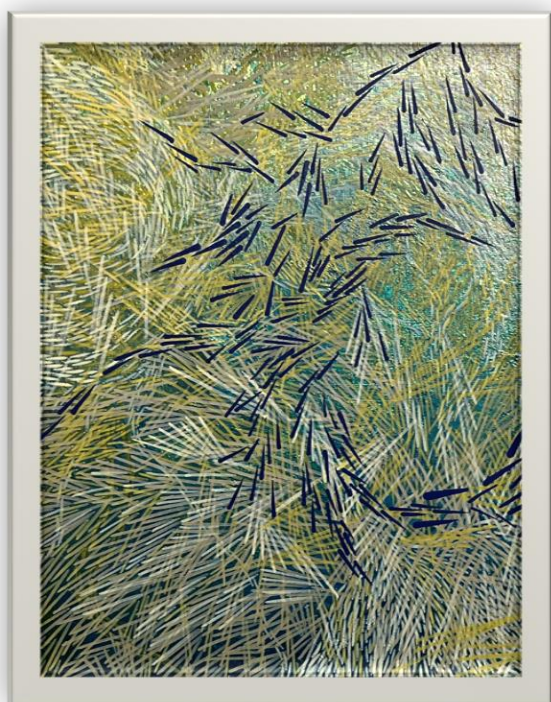
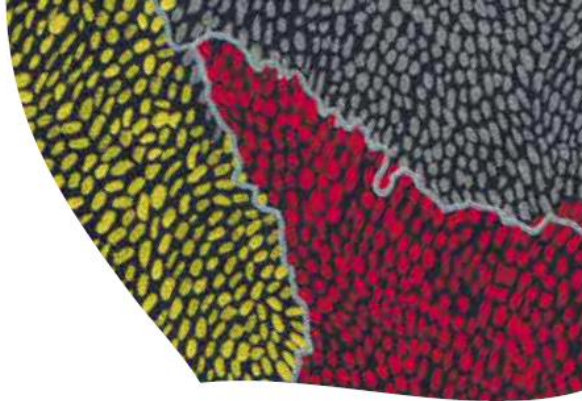


Nebula 2

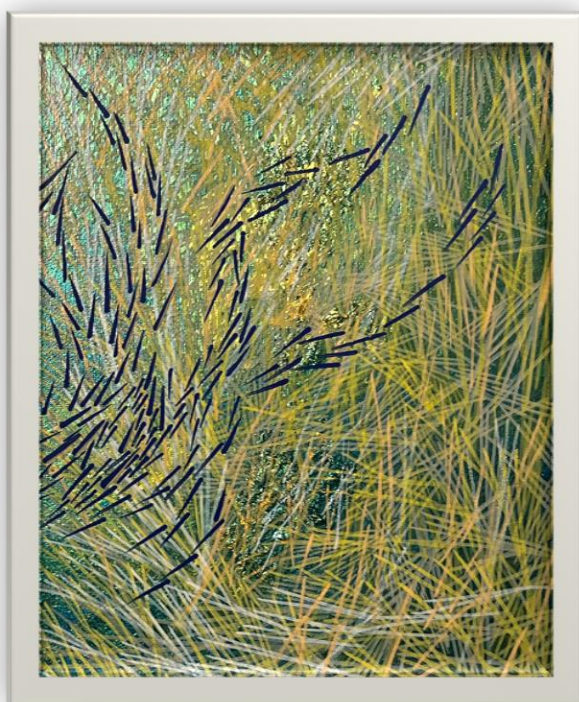
Descending

HIS UNIVERSE

The collection of diptychs



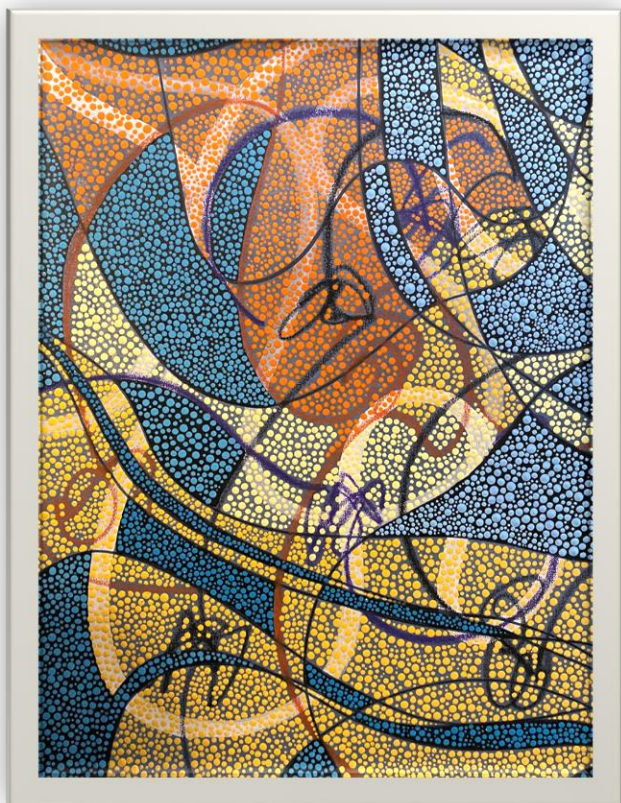
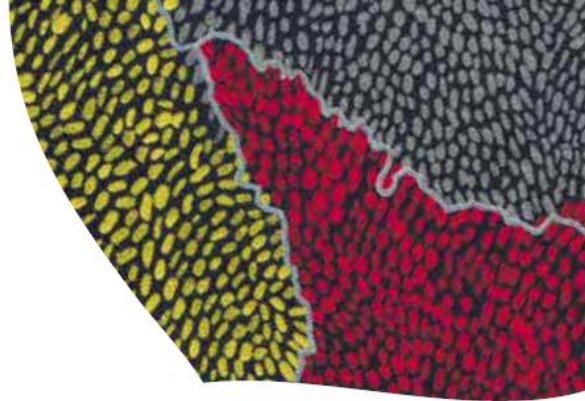
Feathers 1



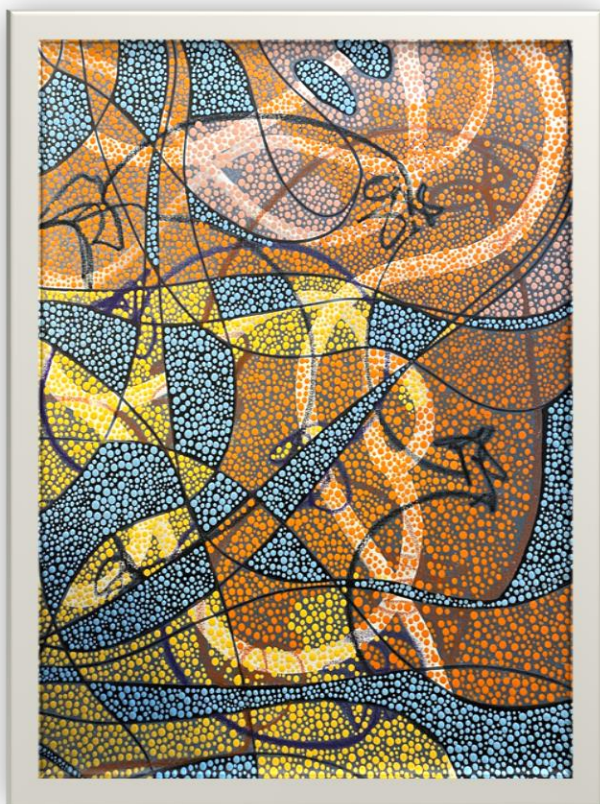
Feathers 2

HIS UNIVERSE

The collection of diptychs



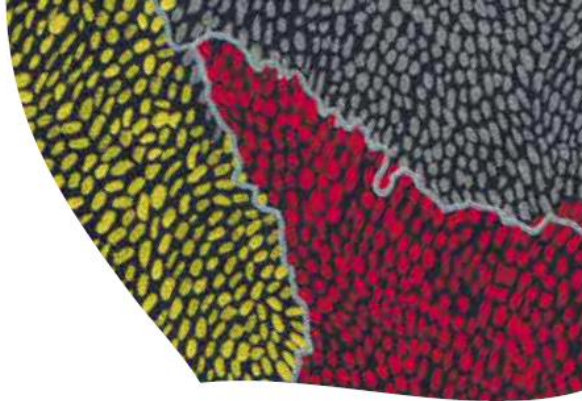
Puzzle 1



Puzzle 2

HIS UNIVERSE

Small ones



METEOR

Galactic
trip

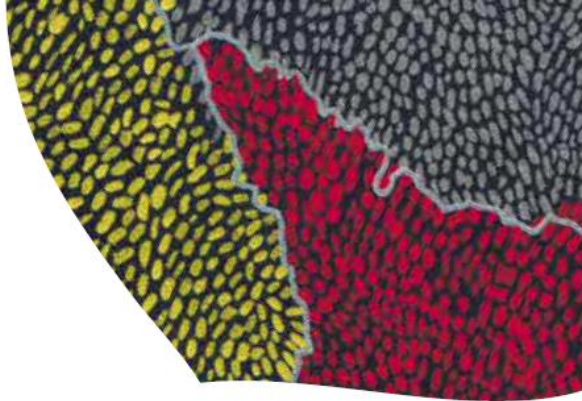


COSMOS

Celestial
order

HIS UNIVERSE

Small ones



PEARL

Wild
mother of pearl



SKIN

Molting

HIS UNIVERSE

Small ones



INTO THE WOODS

Wall relic



INTO THE WILD

Floral relic

HIS UNIVERSE

Small ones

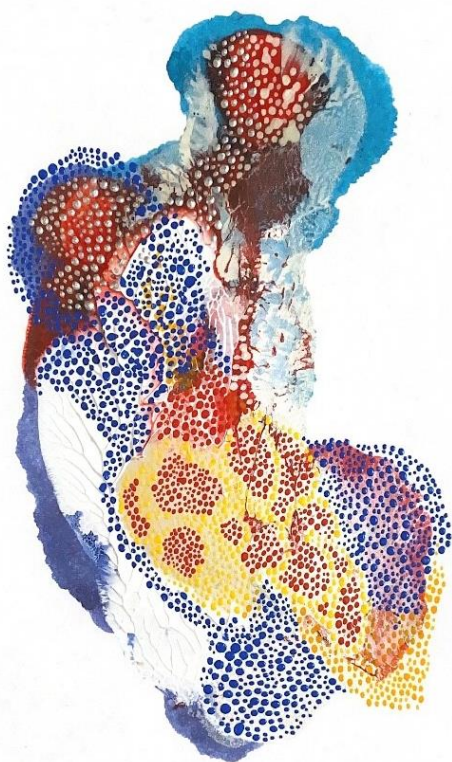
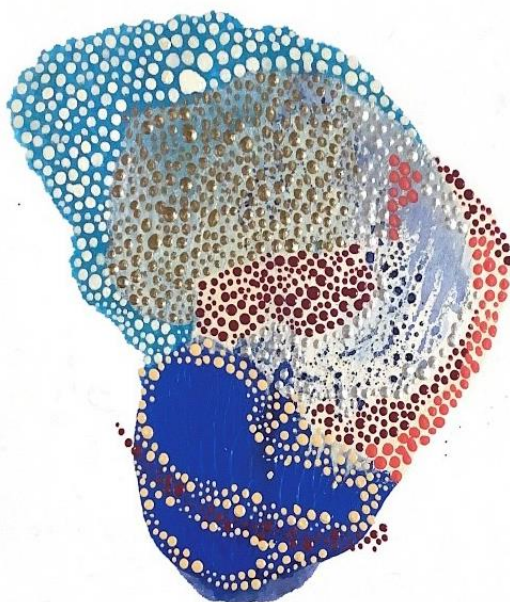
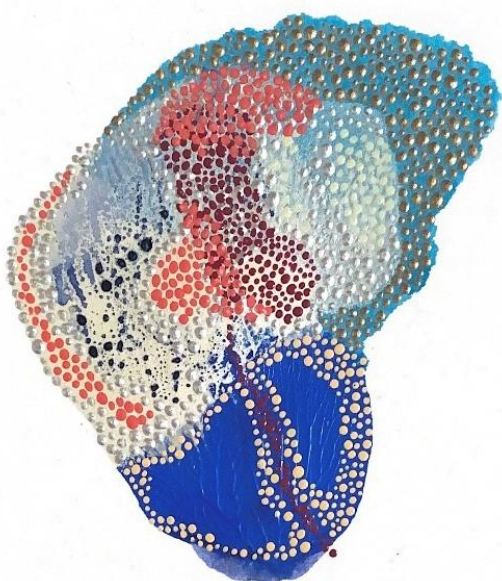
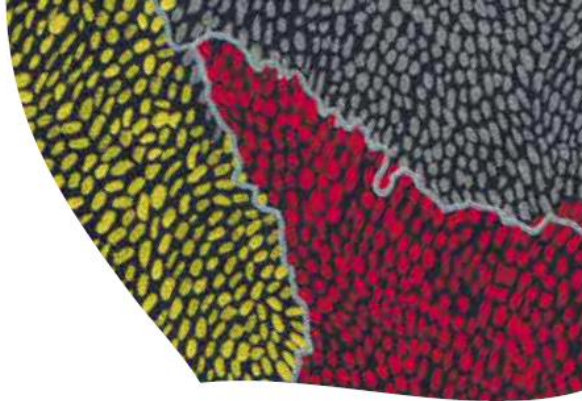


BY THE LAKE

Static lake

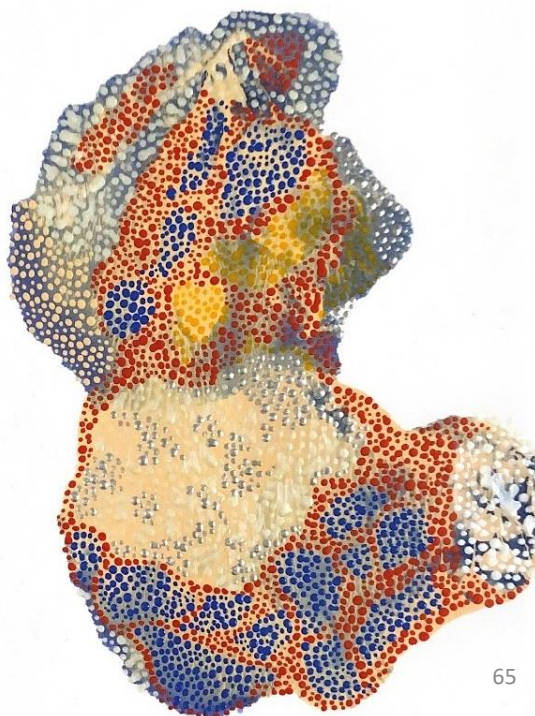
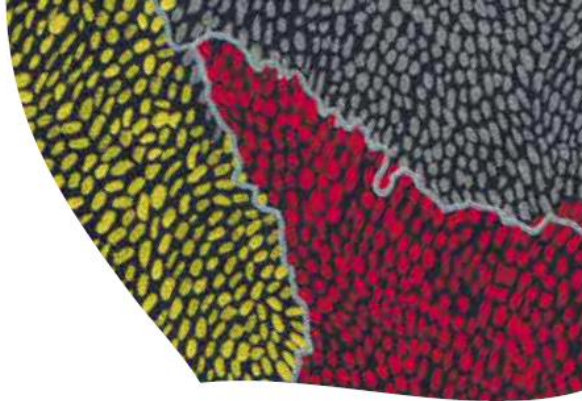
HIS UNIVERSE

Drawing from "Variation" series



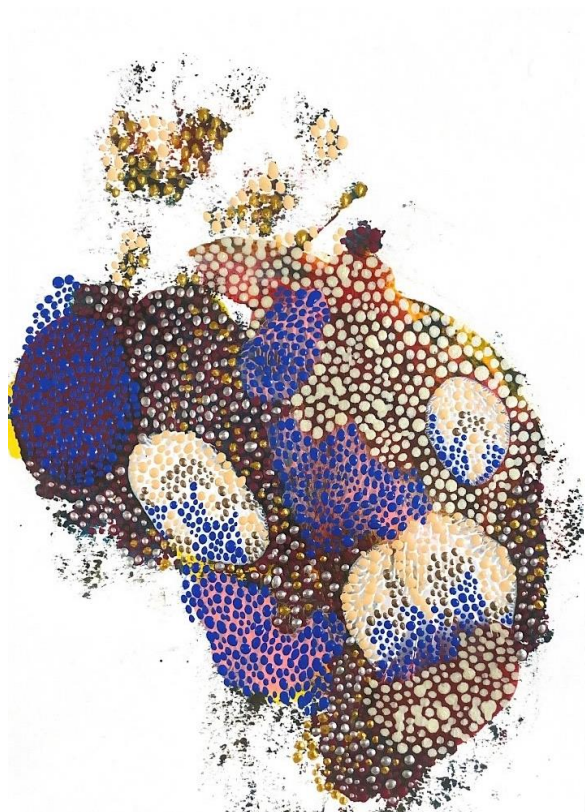
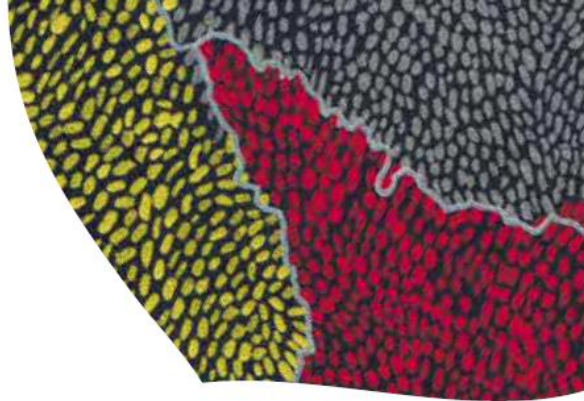
HIS UNIVERSE

Drawing from "Variation" series



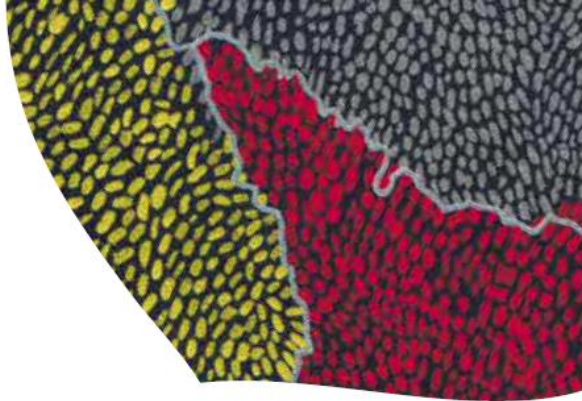
HIS UNIVERSE

Drawing from "Archipelagos" series



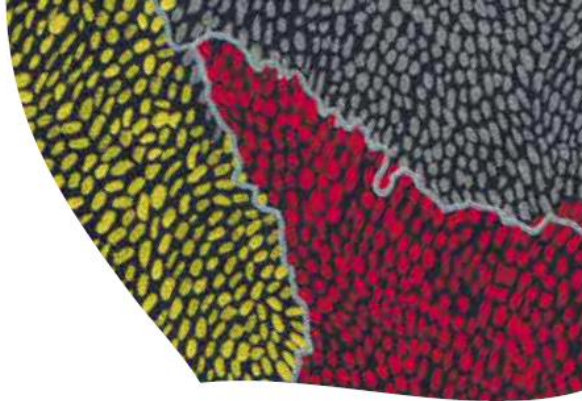
HIS UNIVERSE

Drawing from “2024 Variations” series



HIS UNIVERSE

Messaging...



HIS UNIVERSE

Objects



NEOPLASM

Table

HIS UNIVERSE

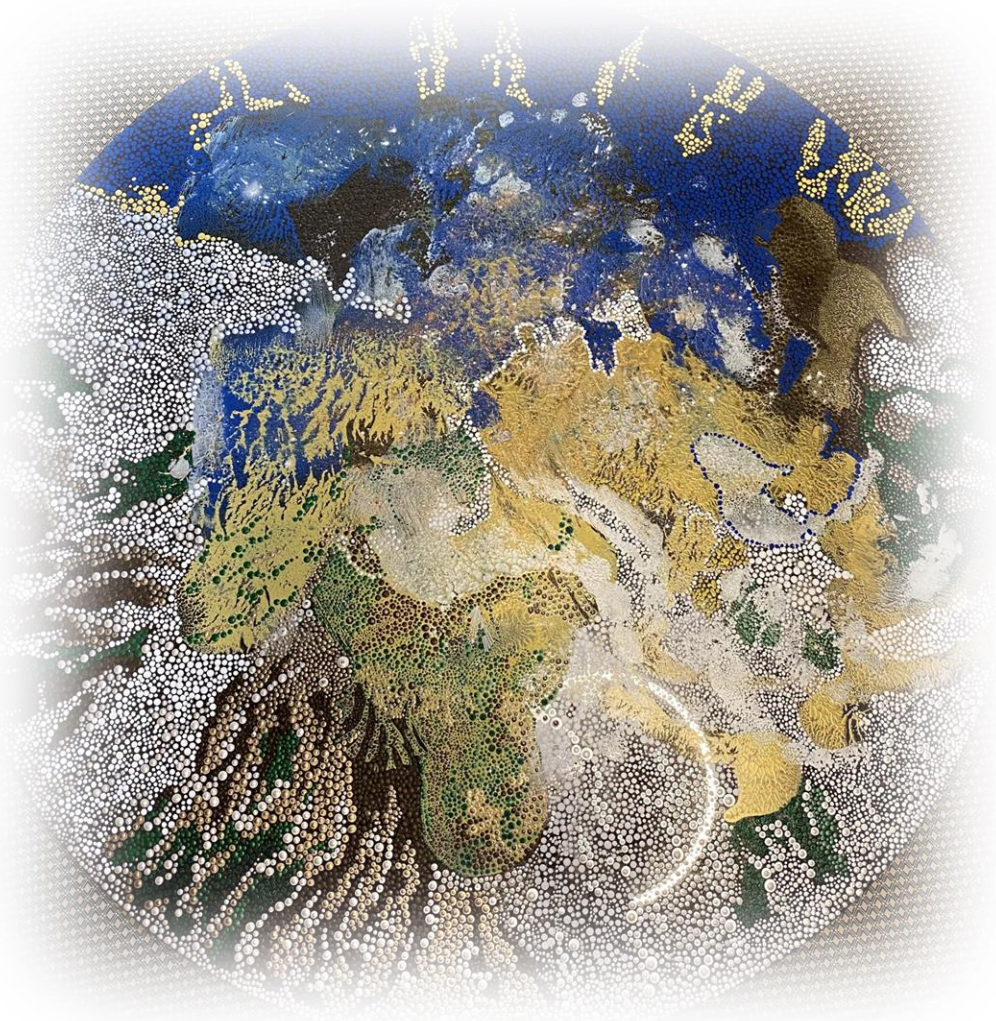
Paintings on glass sheet



RECIFE

HIS UNIVERSE

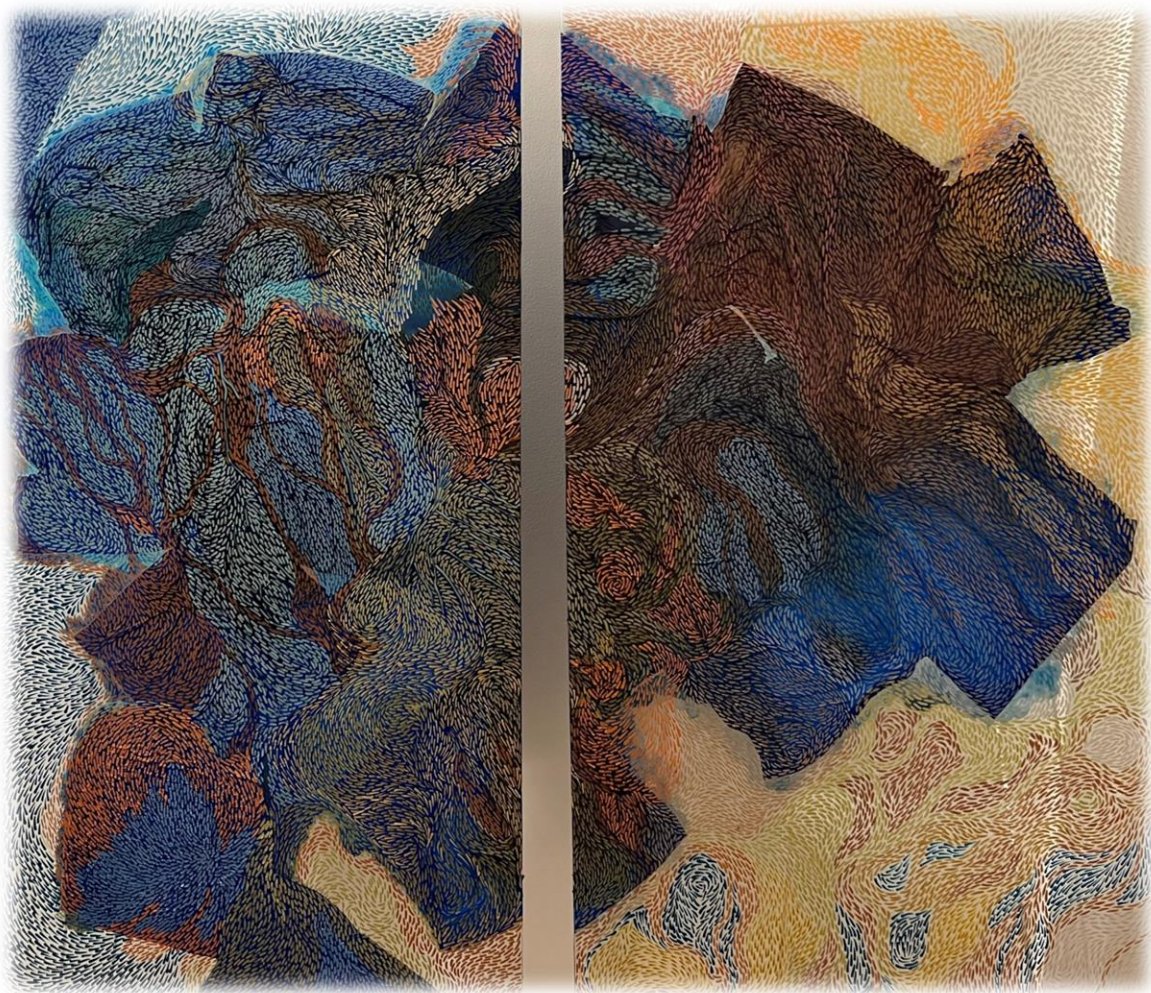
Paintings on glass sheet



EARTH

HIS UNIVERSE

Paintings on glass sheet



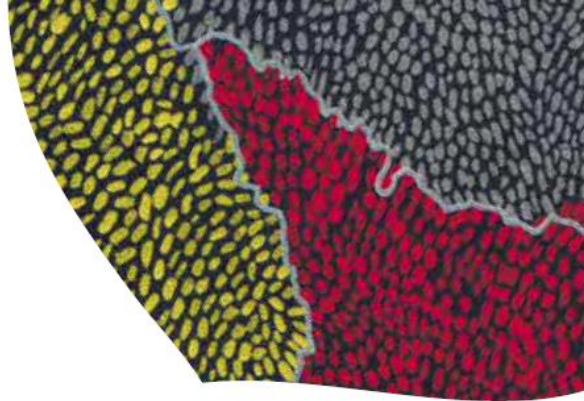
SWAMP 1 & 2

Transition zone

EVENTS



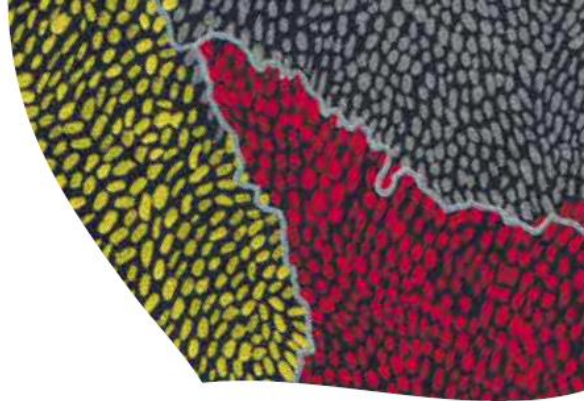
EVENTS



● EXHIBITIONS

- 2025** Individual Exhibition – Printemps de Bourges – April 2025
- 2025** Paris « Salon des Artistes Français » at Grand Palais
- 2024** Paris « Salon d’Automne » (121st edition) – October 2024
- 2024** 6th Contemporary Art Biennale in Versailles, France
- 2024** Exhibition at Town Hall, Viroflay, France
- 2023** Paris « Salon d’Automne » (120th edition) – January 2024
- 2023** Exhibition Seiziem’Art, Group of Artists of Paris 16th District
- 2023** Exhibition at Nivillers Art Fair, France - Guest of Honor
- 2023** Exhibition « Seiziem’Art » at Paris Town Hall in 16th District
- 2023** Exhibition at “Cercle des Artistes de Paris », Parc floral de Paris
- 2023** Paris « Salon des Artistes Français » at Grand Palais Ephémère
- 2022** Exhibition Seiziem’Art at « Point du Jour », Paris 16th District
- 2022** Paris « Salon d’Automne » (119th edition)
- 2022** Exhibition in Nivillers, France, 1st Painting Prize
- 2022** 5th Contemporary Art Biennale in Versailles, France

EVENTS



● EXHIBITIONS

- | | |
|------|--|
| 2021 | Paris « Salon d'Automne » (118th edition) |
| 2020 | Paris « Salon d'Automne » (117th edition) |
| 2020 | 4th Contemporary Art Biennale in Versailles, France |
| 2020 | « Roz & Winkler » Gallery in Barbizon, France |
| 2019 | « Au Daume » Gallery, Paris, 1 ^{er} Painting Prize |
| 2019 | « Seizièm'Art » Exhibition –Group of Artists of the 16th District, Paris |
| 2019 | Exhibition at « La Dodane » Gallery, Amiens, France |
| 2019 | Exhibition at Nivillers Art Fair, France, 1st Painting Prize |
| 2019 | Exhibition at the Flesselles Castle, France, 1st Painting Prize |
| 2018 | Exhibition in Saint-Paul, France – Audience Prize |

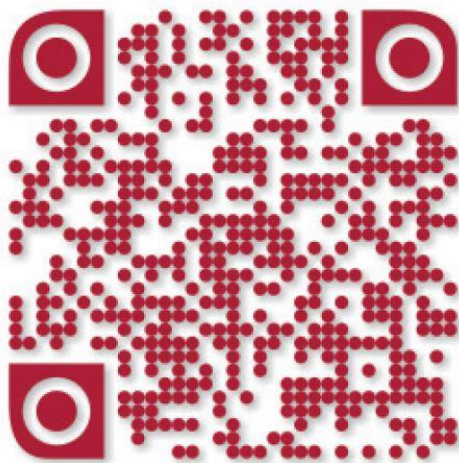
PRESS CONTACTS



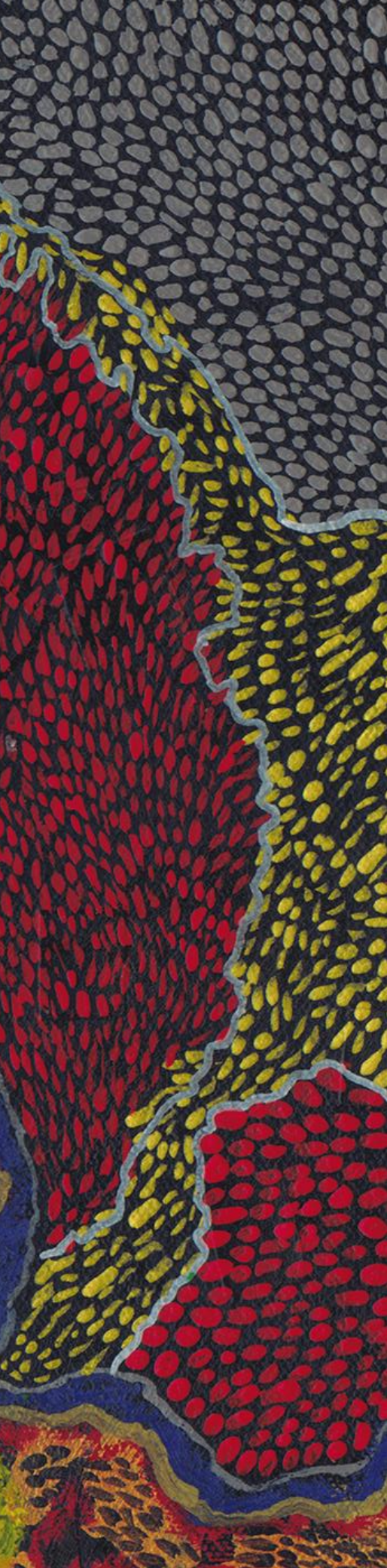
PRESS CONTACT

Workshop at 7 rue du Général Appert, 75116 Paris
(upon appointment)

00 (33) 7 70 22 50 30
eric@ericblin.com



ERIC BLIN



www.ericblin.com